

PhotoSonus M



See list of publications
written by employing
PhotoSonus series lasers



High Energy, Mobile, Tunable Wavelength Laser Source for Photoacoustic Imaging

PhotoSonus M

Following the demand for high output energies in the photoacoustic market for imaging larger volumes of tissue, PhotoSonus M, an updated high energy tunable laser source for photo-acoustic imaging, was introduced.

Time-tested EKSPLA nanosecond pump laser, parametric oscillator, power supply and cooling unit are integrated in a single robust housing to provide mobility, ease of use and low maintenance cost. The highly flexible PhotoSonus M platform makes it easily integrated and used in a photoacoustic imaging system. It is fully motorized and computer controlled, with user trigger outputs and inputs and special options such as motorized switching between OPO signal and idler, motorized attenuator, internal energy meter and electromechanical output shutter.

Recently, a fast wavelength switching option was introduced that enables each laser pulse to have a different wavelength within the entire signal or idler range and at any sequence. This new feature, combining high pulse energy (up to 180 mJ) and wide wavelength tuning range (330 – 2300 nm) makes PhotoSonus M the irreplaceable imaging source for any photo acoustic system.

For even higher sample imaging depth and resolution a PhotoSonus M+, with up to 250 mJ maximum pulse energy, was introduced.

For convenience, the outputs of PhotoSonus M and PhotoSonus M+ lasers can be coupled with almost any type of fiber bundle.

Features

High up to **250 mJ** output energy

Wide tuning range from **330 to 2300 nm**

Ultra-wide OPO signal tuning range from **660 to 1320 nm**

10 Hz or 20 Hz pulse repetition rate

Integrated pump laser, OPO and PSU in single mobile unit

Low maintenance cost

Fiber bundle connectors with safety interlock

Fast wavelength switching within entire signal or idler range between two consecutive pulses

Integrated energy meter (optional)

Motorized attenuator (optional)

Access to pump laser wavelengths 1064/532 nm (optional)

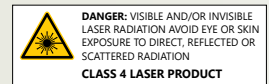
330 – 2300 nm / 250 mJ / 10 Hz 20 Hz



Learn more
about PhotoSonus M
www.ekspla.com

Specifications ¹⁾

Model	PhotoSonus M-10	PhotoSonus M-20	PhotoSonus M+
OPO			
Wavelength range	Signal	660 – 1320 nm	660 – 1064 nm ²⁾
	SH extension range (optional)	330 – 659 nm	330 – 530 nm (330 – 659 nm ³⁾)
	Idler (optional)	1065 – 2300 nm	
OPO output MAX pulse energy ⁴⁾	> 180 mJ	> 160 mJ	> 250 mJ
Pulse repetition rate	10 Hz	20 Hz	10 Hz
Scanning step	Signal	0.1 nm	
	Idler	1 nm	
Pulse duration ⁵⁾		3 – 5 ns	
Signal linewidth ⁶⁾		< 15 cm ⁻¹	
Typical signal beam diameter (1/e ²) ⁷⁾	7 ± 2 mm		9 ± 2 mm
Physical characteristics			
Unit size (W × L × H mm)	434 × 672 × 887 mm		
Operating requirements			
Room temperature	18 – 27 °C		
Relative humidity	20 – 80 % (non-condensing)		
Power requirements ⁸⁾	200 – 240 VAC, single phase, 50/60 Hz		
Power consumption	< 1.5 kVA	< 2.5 kVA	< 2.5 kVA
<div><div><div><div><div><div></div><div></div></div></div><div><div><div></div><div></div></div></div><div><div><div></div><div></div></div></div></div></div><div><div><div></div><div></div></div></div><div><div><div></div><div></div></div></div></div> <div><div><div></div><div></div></div></div> <div><div><div></div><div></div></div></div> <div><div><div></div><div></div></div></div> <div><div><div></div><div></div></div></div> <div><div><div></div><div></div></div></div> <div><div><div></div><div></div></div></div> <div><div><div></div><div></div></div></div> <div><div><div></div><div></div></div></div> <div><div><div></div><div></div></div></div> <div><div><div></div><div></div></div></div> <div><div><div></div><div></div></div></div> <div><div><div></div><div></div></div></div> <div><div><div></div><div></div></div></div> <div><div><div></div><div></div></div></div> <div><div><div></div><div></div></div></div> <div><div><div></div><div></div></div></div> <div><div><div></div><div></div></div></div> <div><div><div></div><div></div></div></div> <div><div><div></div><div></div></div></div> <div><div><div></div><div></div></div></div> <div><div><div></div><div></div></div></div> <div><div><div></div><div></div></div></div> <div><div><div></div><div></div></div></div> <div><div><div></div><div></div></div></div> <div><div><div></div><div></div></div></div> <div><div><div></div><div></div></div></div> <div><div><div></div><div></div></div></div> <div><div><div></div><div></div></div></div> <div><div><div></div><div></div></div></div> <div><div><div></div><div></div></div></div> <div><div><div></div><div></div></div></div> <div><div><div></div><div></div></div></div> <div><div><div></div><div></div></div></div> <div><div><div></div><div></div></div></div> <div><div><div></div><div></div></div></div> <div><div><div></div><div></div></div></div> <div><div><div></div><div></div></div></div> <div><div><div></div><div></div></div></div> <div><div><div></div><div></div></div></div> <div><div><div></div><div></div></div></div> <div><div><div></div><div></div></div></div> <div><div><div></div><div></div></div></div> <div><div><div></div><div></div></div></div> <div><div><div></div><div></div></div></div> <div><div><div></div><div></div></div></div> <div><div><div></div><div></div></div></div> <div><div><div></div><div></div></div></div> <div><div><div></div><div></div></div></div> <div><div><div></div><div></div></div></div> <div><div><div></div><div></div></div></div> <div><div><div></div><div></div></div></div> <div><div><div></div><div></div></div></div> <div><div><div></div><div></div></div></div> <div><div><div></div><div></div></div></div> <div><div><div></div><div></div></div></div> <div><div><div></div><div></div></div></div> <div><div><div></div><div></div></div></div> <div><div><div></div><div></div></div></div> <div><div><div></div><div></div></div></div> <div><div><div></div><div></div></div></div> <div><div><div></div><div></div></div></div> <div><div><div></div><div></div></div></div> <div><div><div></div><div></div></div></div> <div><div><div></div><div></div></div></div> <div><div><div></div><div></div></div></div> <div><div><div></div><div></div></div></div> <div><div><div></div><div></div></div></div> <div><div><div></div><div></div></div></div> <div><div><div></div><div></div></div></div> <div><div><div></div><div></div></div></div> <div><div><div></div><div></div></div></div> <div><div><div></div><div></div></div></div> <div><div><div></div><div></div></div></div> <div><div><div></div><div></div></div></div> <div><div><div></div><div></div></div></div> <div><div><div></div><div></div></div></div> <div><div><div></div><div></div></div></div> <div><div><div></div><div></div></div></div> <div><div><div></div><div></div></div></div> <div><div><div></div><div></div></div></div> <div><div><div></div><div></div></div></div> <div><div><div></div><div></div></div></div> <div><div><div></div><div></div></div></div> <div><div><div></div><div></div></div></div> <div><div><div></div><div></div></div></div> <div><div><div></div><div></div></div></div> <div><div><div></div><div></div></div></div> <div><div><div></div><div></div></div></div> <div><div><div></div><div></div></div></div> <div><div><div></div><div></div></div></div> <div><div><div></div><div></div></div></div> <div><div><div></div><div></div></div></div> <div><div><div></div><div></div></div></div> <div><div><div></div><div></div></div></div> <div><div><div></div><div></div></div></div> <div><div><div></div><div></div></div></div> <div><div><div></div><div></div></div></div> <div><div><div></div><div></div></div></div> <div><div><div></div><div></div></div></div> <div><div><div></div><div></div></div></div> <div><div><div></div><div></div></div></div> <div><div><div></div><div></div></div></div> <div><div><div></div><div></div></div></div> <div><div><div></div><div></div></div></div> <div><div><div></div><div></div></div></div> <div><div><div></div><div></div></div></div> <div><div><div></div><div></div></div></div> <div><div><div></div><div></div></div></div> <div><div><div></div><div></div></div></div> <div><div><div></div><div></div></div></div> <div><div><div></div><div></div></div></div> <div><div><div></div><div></div></div></div> <div><div><div></div><div></div></div></div> <div><div><div></div><div></div></div></div> <div><div><div></div><div></div></div></div> <div><div><div></div><div></div></div></div> <div><div><div></div><div></div></div></div> <div><div><div></div><div></div></div></div> <div><div><div></div><div></div></div></div> <div><div><div></div><div></div></div></div> <div><div><div></div><div></div></div></div> <div><div><div></div><div></div></div></div> <div><div><div></div><div></div></div></div> <div><div><div></div><div></div></div></div> <div><div><div></div><div></div></div></div> <div><div><div></div><div></div></div></div> <div><div><div></div><div></div></div></div> <div><div><div></div><div></div></div></div> <div><div><div></div><div></div></div></div> <div><div><div></div><div></div></div></div> <div><div><div></div><div></div></div></div> <div><div><div></div><div></div></div></div> <div><div><div></div><div></div></div></div> <div><div><div></div><div></div></div></div> <div><div><div></div><div></div></div></div> <div><div><div></div><div></div></div></div> <div><div><div></div><div></div></div></div> <div><div><div></div><div></div></div></div>			



Performance

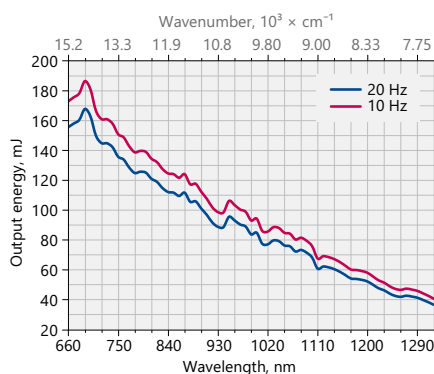


Fig 1. Typical PhotoSonus M-10 and M-20 Extended signal output pulse energy vs. wavelength curve

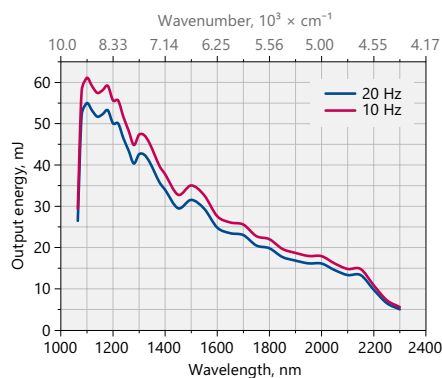


Fig 2. Typical PhotoSonus M-10 and M-20 Idler output pulse energy vs. wavelength curve

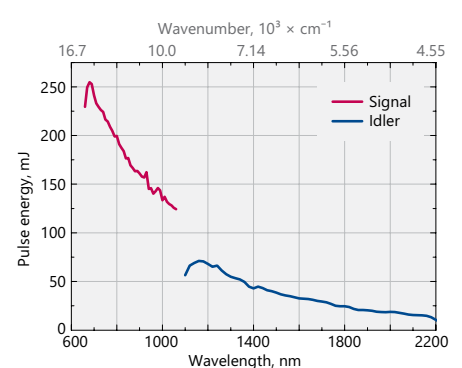
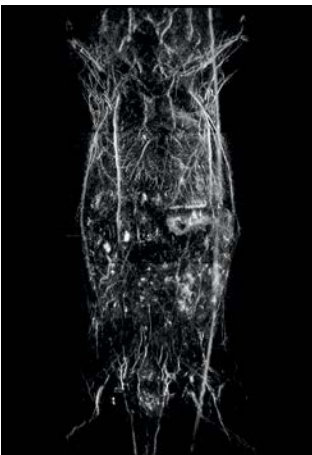


Fig 3. Typical PhotoSonus M+ signal and idler output pulse energy vs. wavelength curve

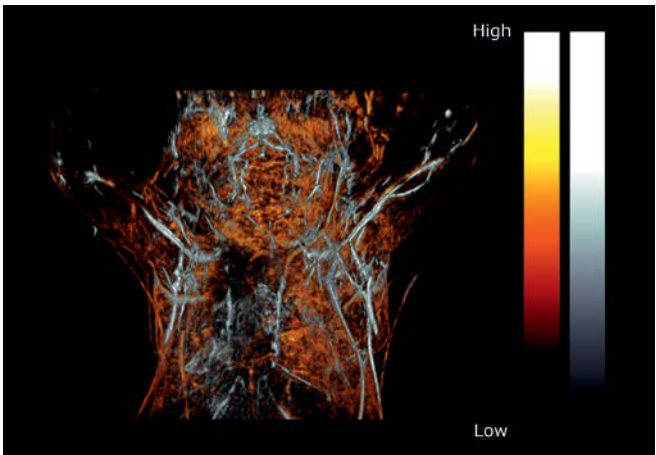
Sample Photoacoustic Images



Photoacoustic image of a mouse.



Photoacoustic image of the mouse liver.



Photoacoustic image of the upper torso and brain of a female mouse.

Courtesy of PhotoSound Technologies, Inc.

Drawings

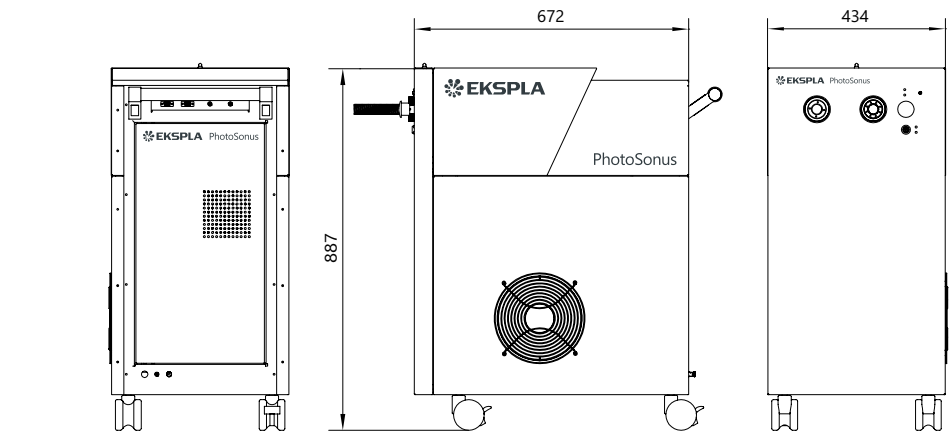


Fig 4. PhotoSonus M outline drawings (mm)

Ordering information

Note: Laser must be connected to the mains electricity all the time. If there will be no mains electricity for longer than 1 hour then laser (system) needs warm up for a few hours before switching on.

PhotoSonus M-10-IDL-SH-ATTN-H-EM-PD			
Model		PD → footswitch laser emission control	
M → Mobile version		EM → OPO energy meter	
M+ → Mobile highest energy version (10 Hz only)		H → 1064 nm pump wavelength output	
Repetition rate:		2H → 532 nm pump wavelength output	
10 → 10 Hz		ATTN → OPO attenuator	
20 → 20 Hz			
IDL → idler option			
OPO extension:			
SH → OPO SH extension range			
ER → extended OPO signal range (for M+ model only)			