

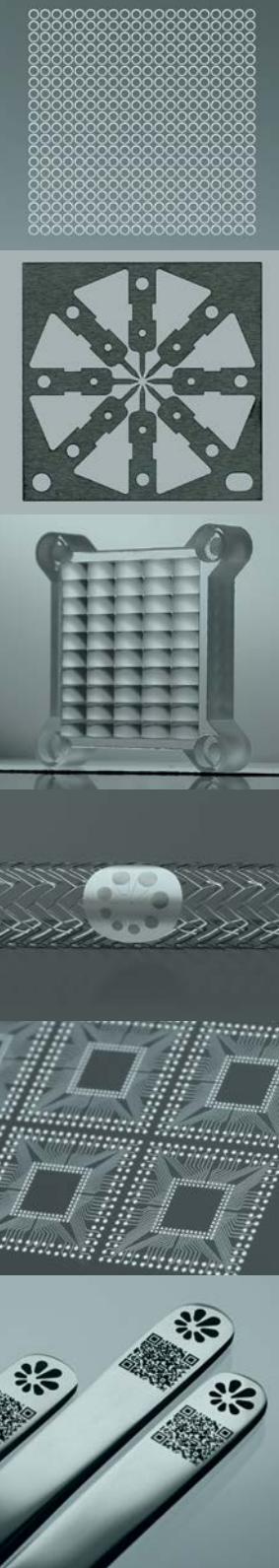


Advanced Laser Technologies

# Industrial Femtosecond Lasers

## FemtoLux Series

Award winning tools for  
micromachining applications



2026

Rev#  
260331

# Industrial Femtosecond Lasers

## SPECIFICATIONS AT A GLANCE

Not all output specifications may be available simultaneously.  
Please refer to the catalog page for exact specifications and available options.

Model	Available output wavelengths	Pulse duration	Max output power	Max repetition rate	Max pulse energy	Page
<b>FemtoLux 50</b>	1030 nm 515 nm 343 nm	400 fs – 1 ps	> 45 W (typical 50 W)	2 MHz	300 µJ	8
<b>FemtoLux HE</b>	1030 nm	400 fs – 1 ps	30 W	1 MHz	1 mJ	8
<b>FemtoLux 30</b>	1030 nm 515 nm 343 nm	350 fs – 1 ps	> 27 W (typical 30 W)	4 MHz	300 µJ	8
<b>FemtoLux 3</b>	1030 nm 515 nm	300 fs – 2.5 ps	3 W	5 MHz (7 MHz optional)	3 µJ	22

Due to the constant product improvements, EKSPLA reserves its right to change specifications without advance notice.



Learn more about  
EKSPLA

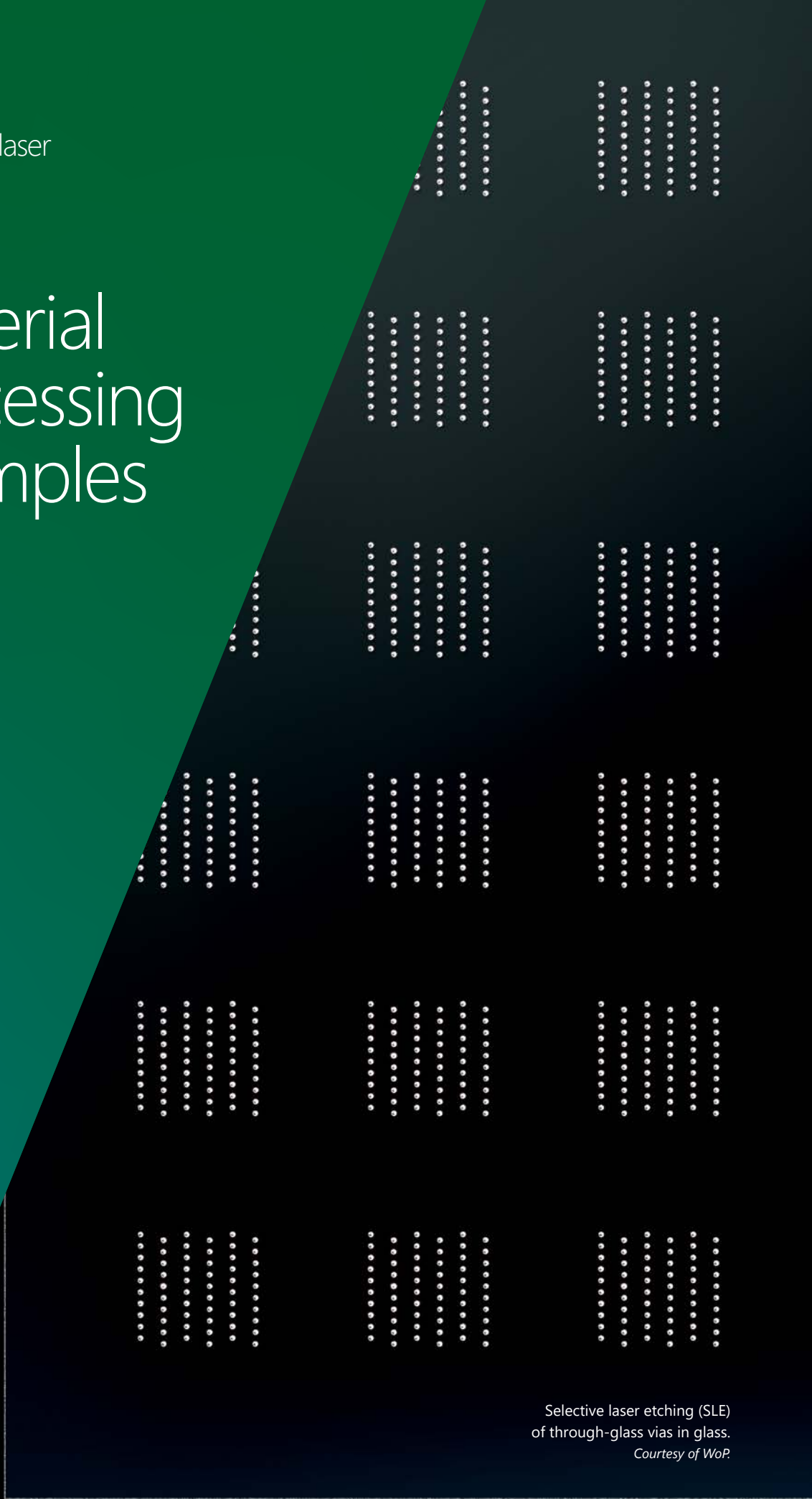


Latest information  
about Industrial Lasers  
[www.ekspla.com](http://www.ekspla.com)



Made with  
**FemtoLux** laser

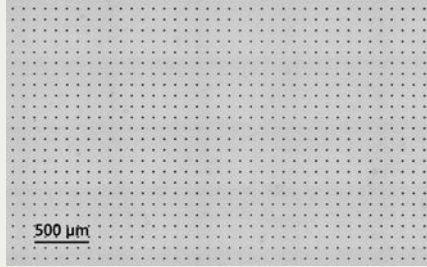
# Material processing examples



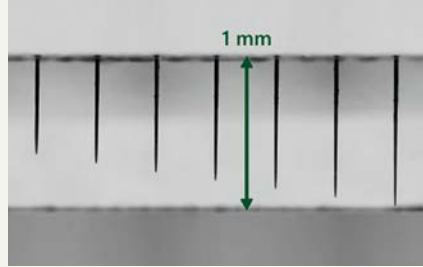
Selective laser etching (SLE)  
of through-glass vias in glass.  
*Courtesy of WoP.*

## Glass

### Through glass vias (TGVs) fabrication

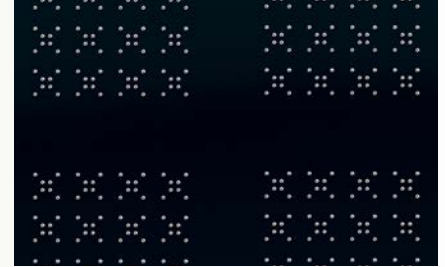


GHz burst assisted percussion drilling of high aspect ratio holes in EXG glass.  
*Courtesy of Akoneer.*



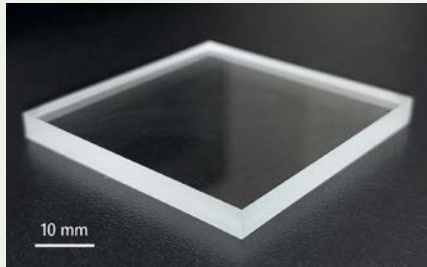
GHz burst assisted percussion drilling of high aspect ratio holes in EXG glass.  
*Courtesy of Akoneer.*

TAILORED FOR SEMICONDUCTOR INDUSTRY



Selective laser etching (SLE) of through-glass vias in glass.  
*Courtesy of WoP.*

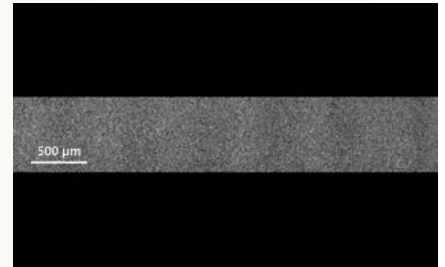
### Laser-based Bessel beam scribing



Laser-based Bessel beam scribing of 4.8 mm soda-lime glass.  
*Courtesy of FTMC.*

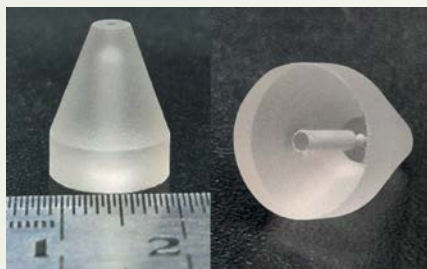


Scribed 4.8 mm soda-lime edge view.  
*Courtesy of FTMC.*

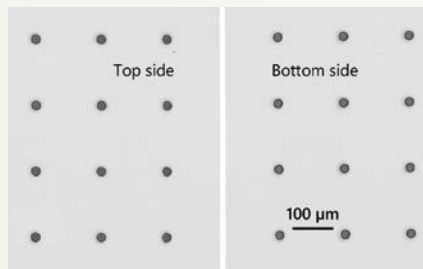


Scribed 1 mm soda-lime side wall view.  
*Courtesy of FTMC.*

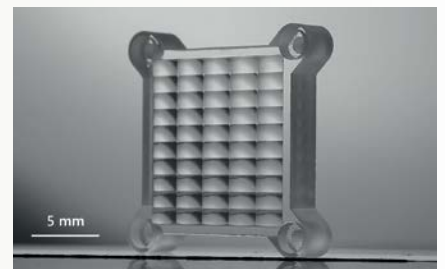
### Bottom-up milling of glass



Glass nozzle fabrication by using multi-step bottom-up milling.  
*Courtesy of FTMC.*

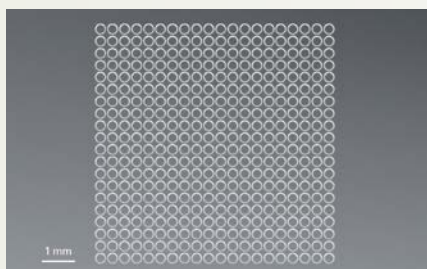


Bottom-up milling of 100 μm diameter taper-free channels in glass.  
*Courtesy of FTMC.*

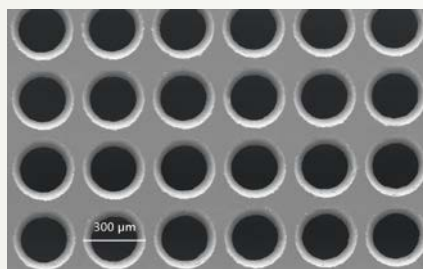


Cutting custom micro-lens array substrate from thick fused-silica glass.  
*Courtesy of FTMC.*

### Thin glass cutting



300 μm hole drilling in thin borosilicate glass.  
*Courtesy of FTMC.*



SEM image of 300 μm holes in borosilicate glass.  
*Courtesy of FTMC.*

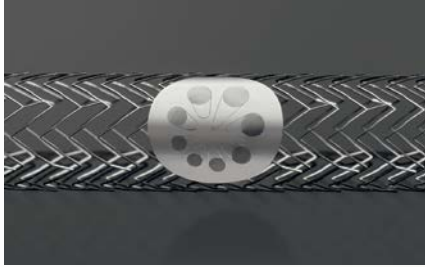


Thin fused-silica cutting.  
*Courtesy of FTMC.*

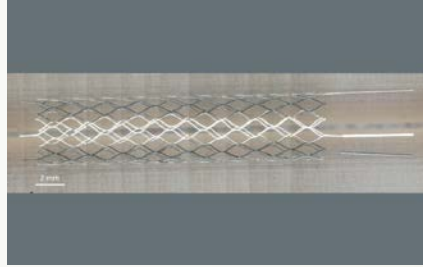
# Material Processing Examples

## Metal

### Nitinol stent cutting

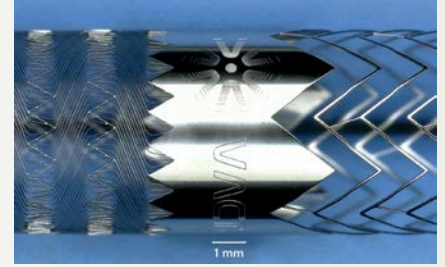


Nitinol stent cutting.  
Courtesy of Vactronix Scientific.



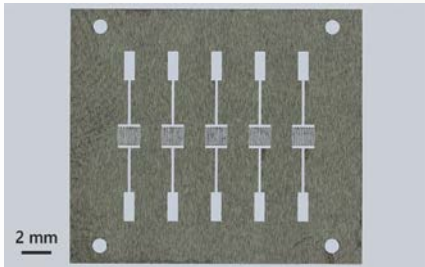
Nitinol stent cutting.  
Courtesy of JEM Laser.

TAILORED FOR MEDICAL INDUSTRY

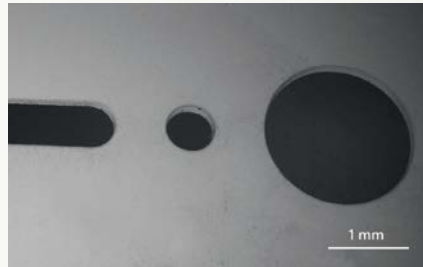


Nitinol stent cutting.  
Courtesy of Vactronix Scientific.

### Metal cutting



50 µm thickness stainless steel cutting.  
Courtesy of Laser Micromachining Ltd.

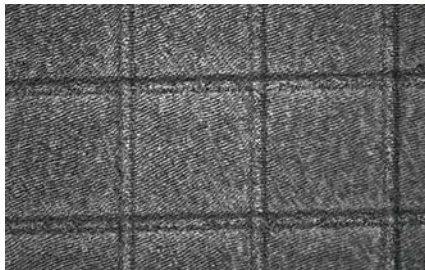


125 µm thickness tantalum cutting.  
Courtesy of Laser Micromachining Ltd.

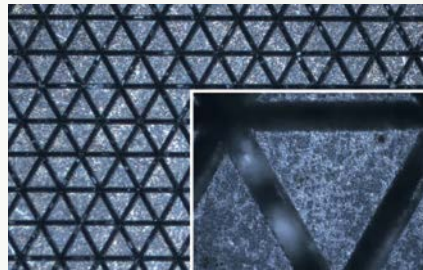


Kovar cutting.  
Courtesy of Laser Micromachining Ltd.

### Surface structuring



Grid surface texturing with LIPSS of nitinol.  
Courtesy of UNIMORE



Triangular surface texturing with LIPSS of stainless steel.  
Courtesy of UNIMORE.



Textured aluminum molds.  
Courtesy of FTMC.

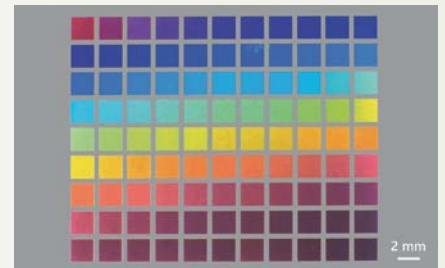
### Marking



Black marking of tweezers.  
Courtesy of FTMC.



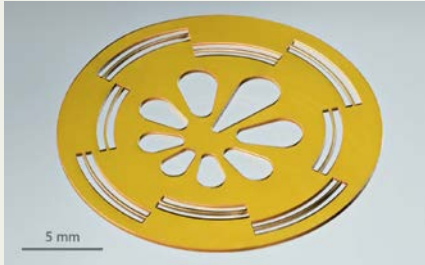
Color marking of stainless steel.  
Courtesy of Akoneer.



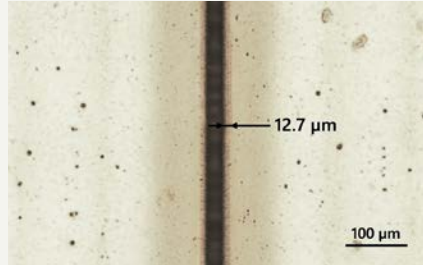
Color marking of titanium film.  
Courtesy of Akoneer.

## Polymer

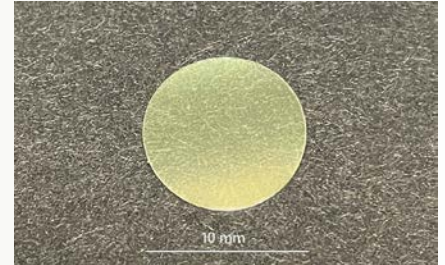
### Cutting of polymer



Polyimide cutting.  
Courtesy of FTMC.

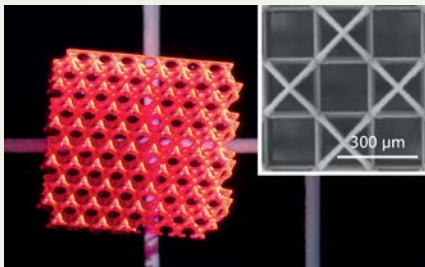


Polyimide cutting with 515 nm, indicated heat affected zone.  
Courtesy of FTMC.

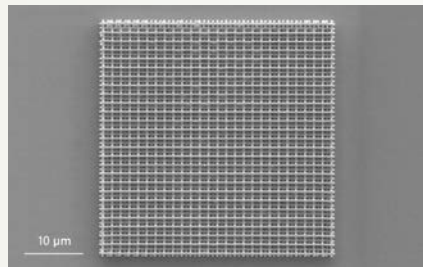


10 mm circle cut out of thin polymer film.  
Courtesy of FTMC.

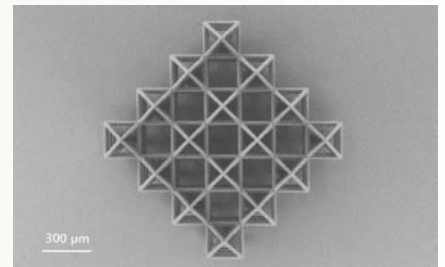
### Photopolymerization



Photopolymerization.  
Courtesy of Femtika.



SEM image of photopolymerization sample.  
Courtesy of WOP.



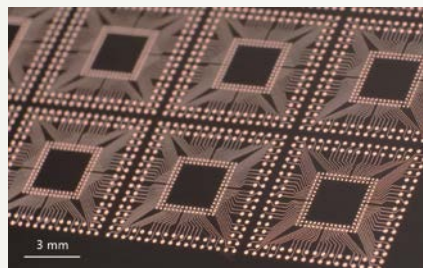
SEM image of photopolymerization sample.  
Courtesy of Femtika.

## SSAIL

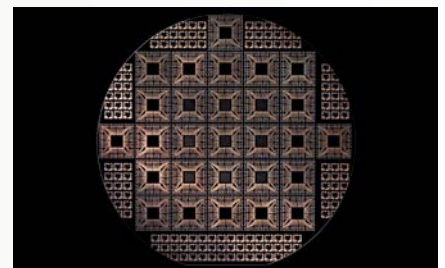
TAILORED FOR SEMICONDUCTOR INDUSTRY

SSAIL is a laser-based technology for **directly writing electronic circuits onto dielectric materials**. The process modifies the dielectric surface, followed by electroless metal plating to form conductive traces.

SSAIL enables trace widths down to **1 μm** and is compatible with a wide range of materials, including **PC/ABS, PMMA, PET, FR-4, Al<sub>2</sub>O<sub>3</sub>, ceramics, fused silica, and silicon**, making it well suited for semiconductor and advanced electronics applications.



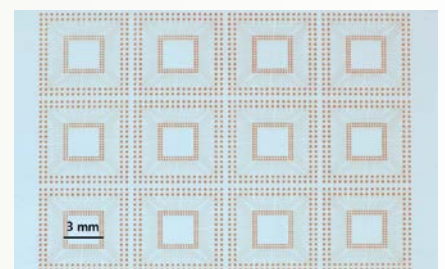
SSAIL technology on PI.  
Courtesy of Akoneer



SSAIL technology on glass wafer.  
Courtesy of Akoneer

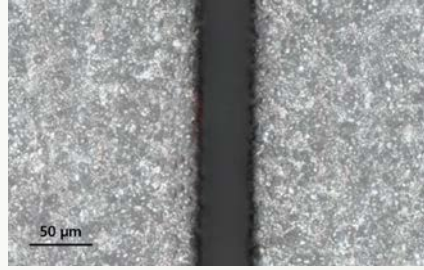


SSAIL technology on PA4T.  
Courtesy of Akoneer.

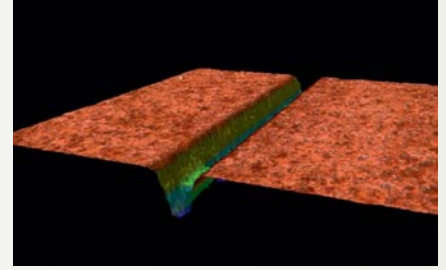


SSAIL technology on glass.  
Courtesy of Akoneer.

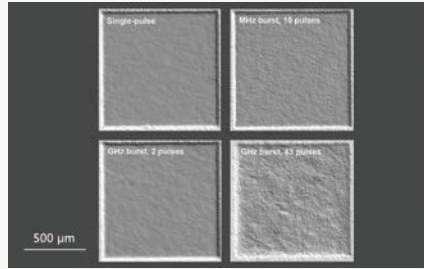
## Other materials



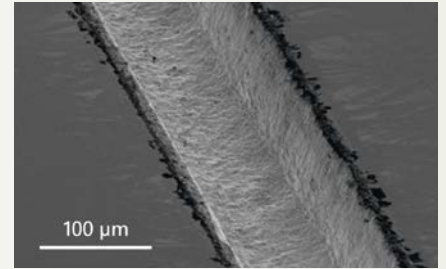
50 µm depth groove formation in ceramic.  
*Courtesy of FTMC.*



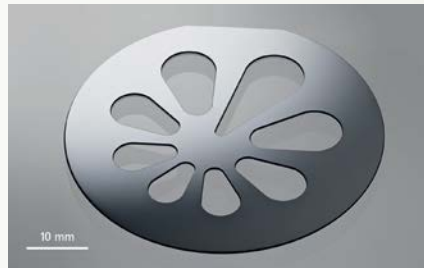
Optical 3D profilometer image of formed groove.  
*Courtesy of FTMC.*



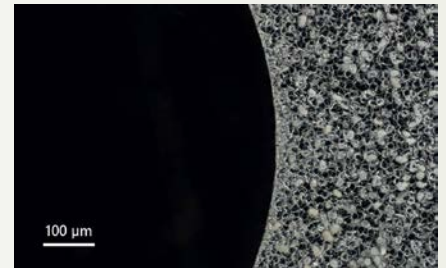
Optical 3D profilometer image of milled alumina squares in different operational modes.



Groove formation in GaAs in water environment.  
*Courtesy of FTMC.*



Cutting of FZ-Si wafer.  
*Courtesy of FTMC.*



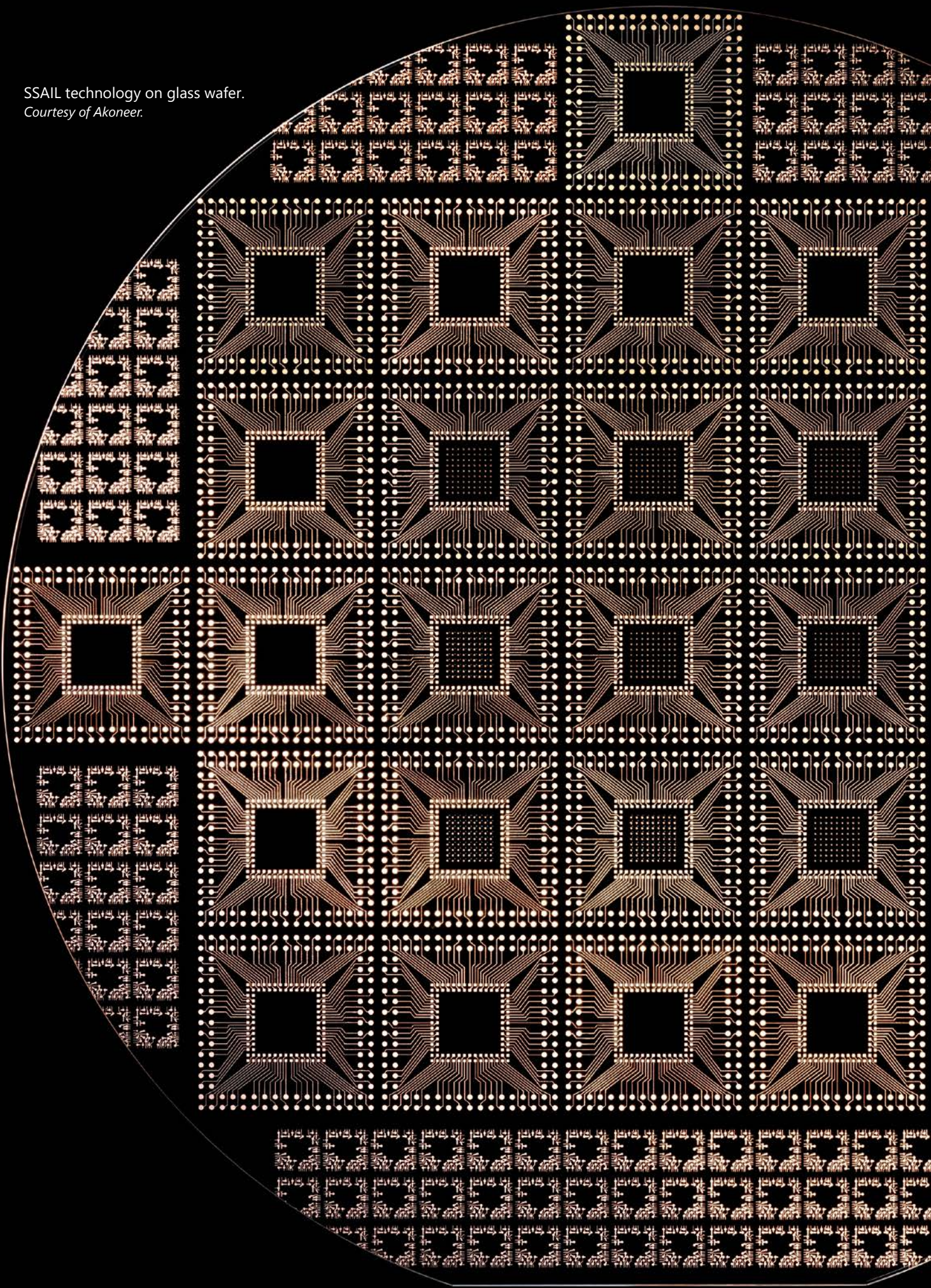
SEM image of processed FZ-Si wafer edge.  
*Courtesy of FTMC.*

## Need a feasibility test for your samples?

Take advantage of EKSPILA's extensive global partner network. Material processing workshops around the world, supported by highly qualified engineers, enable testing of virtually any process on a wide range of materials. Backed by a strong scientific foundation, we offer comprehensive capabilities from initial sample testing to full process development.

Please send your requests to [sales@ekspla.com](mailto:sales@ekspla.com).

SSAIL technology on glass wafer.  
*Courtesy of Akoneer.*



fs

Industrial  
Femtosecond  
Lasers

# FemtoLux

Reliability Redefined



2024

A reliable &  
versatile tool for  
micromachining

/ Micromachining for  
advanced packaging solutions

/ Medical device fabrication

/ Glass micromachining  
and intra-volume structuring

/ Micromachining of  
different metals and polymers

/ Solutions for  
microelectronics fabrication



# Industrial Dry Cooled Femtosecond Laser

# FemtoLux

**Designed from the get-go for maximum reliability, seamless integration and non-stop 24/7/365 zero maintenance operation with innovative "dry" cooling.**

The FemtoLux femtosecond laser has a tunable pulse duration from <400 fs to 1 ps and can operate in a broad AOM controlled range of pulse repetition rates from a single shot to 4 MHz.

The maximum pulse energy is 1 mJ operating with single pulses and can reach even up to 2 mJ in burst mode, ensuring higher ablation rates and processing throughput for different materials.

The FemtoLux beam parameters will meet the requirements of the most demanding materials and micro-machining applications.

Innovative laser control electronics ensure simple control of the FemtoLux laser by external controllers that could run on different platforms, be it Windows, Linux or others using REST API commands.

This makes easy integration and reduces the time and human resources required to integrate this laser into any laser micromachining equipment.

## Seamless User Experience

**Easy integration** – remote control using REST API via RS232 and LAN.

**Reduced integration time** – demo electronics is available for laser control programming in advance.

**Easy and quick installation** – no water, fully disconnectable laser head. Can be installed by the end-user.

**Easy troubleshooting** – integrated detectors and constant system status logging.

**No periodic maintenance** required.

Zero  
maintenance

"Dry"  
cooling

## Features

Typical max output power  
**50 W at 1030 nm,**  
**20 W at 515 nm,**  
**10 W at 343 nm**

Typical max output energies  
**> 300 µJ at 1030 nm,**  
**> 50 µJ at 515 nm,**  
**> 25 µJ at 343 nm**

**Up to 1 mJ** for FemtoLux HE

**MHz, GHz, MHz+GHz burst**  
modes

**up to 2 mJ** in a burst mode

**< 400 fs – 1 ps**

Pulse duration extension  
**up to 1 ns**

**Single shot – up to 4 MHz**  
(AOM controlled)

**Pulse-on-demand (PoD),**  
with jitter as low as 20 ns  
(peak-to-peak)

<0.5% RMS power long term  
stability over 100 hours

$M^2 < 1.2$

Beam ellipticity > 0.85



Learn more  
about FemtoLux  
[www.ekspla.com](http://www.ekspla.com)

# “Dry” Cooling

## Direct Refrigerant Cooling (DRC)

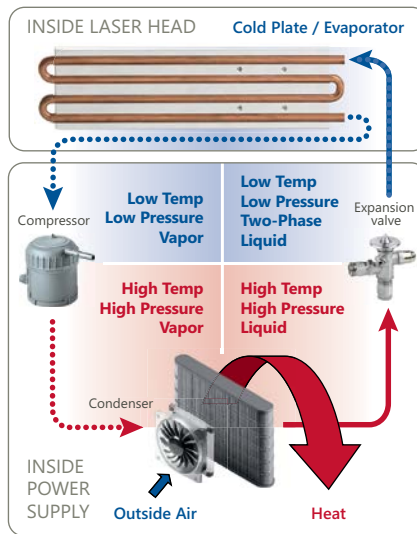
Direct refrigerant cooling is industry-proven thermal-management approach with a long history in everyday technologies such as domestic refrigeration and automotive climate control. Unlike conventional liquid cooling, it operates **without pumped water circuits**, relying instead on direct refrigerant-based heat transfer.

### How DRC Works

At its core, DRC eliminates the inherent reliability limitations of water-based cooling loops. Rather than circulating liquid coolant through pumps, hoses, and reservoirs, refrigerant is delivered **directly to a cold plate** that is in contact to the laser head.

The FemtoLux cooling architecture comprises four key elements: a compressor, condenser, expansion valve, and evaporator. High-pressure refrigerant is circulating through the expansion valve, which is mounted directly on the cooling plate. As the refrigerant expands, it enters the plate as a low-temperature, low-pressure liquid. While flowing through the plate, it absorbs heat from the laser head and undergoes a controlled phase change into vapor. This vapor is then compressed and routed through the condenser, where heat is released to the surrounding environment and the refrigerant returns to liquid form.

The closed refrigerant circuit provides exceptional integration flexibility. The compressor and condenser are housed within the power supply unit, while the cooling plate and expansion valve are connected via **three-meter armored flexible lines**. This arrangement allows the laser head to be installed inside material processing workstations or mounted on moving stages. A variable-speed compressor continuously adjusts cooling output to match real-time thermal demand, preventing temperature fluctuations that can affect laser performance.



DRC layout and compressor picture.  
Courtesy of Aspen Systems Inc.



Learn more about **Dry cooling technology** in this article published in **Photonics Spectra** magazine

### Benefits

**Military-grade** reliability  
>90 000 hours MTBF

**No maintenance**

**50 % lower power consumption** compared to water cooling equipment

**Easy and simple installation**

**Increased stability** due to precise temperature control across a wide range of operating conditions

**“Greenest” cooling technology**



A cooling plate is attached to the laser on one side of the design (above). On the other, a compressor with auxiliary electronics is installed into the laser power supply unit.

## Straightforward Installation and Maintenance-Free Operation



For ease of integration, the cooling plate can be detached from the laser head during system assembly. Flexible refrigerant lines allow the laser head to be positioned independently of the compressor unit, simplifying mechanical integration.

Because the refrigerant loop is **hermetically sealed at the factory**, routine maintenance associated with water-based systems—such as refilling, filter changes, or system flushing—is eliminated entirely.

For system integrators, dry cooling represents a substantial step forward. By removing the constraints of water and air cooling, DRC simplifies system design while enabling compact layouts. The streamlined cold-plate interface reduces installation complexity, and the compact power supply unit supports straightforward system integration.

The absence of pumps and reservoirs keeps system dimensions small. The compressor is up to **10 times smaller and lighter** than conventional designs. The FemtoLux laser head with integrated cooling plate weighs **32 kg**, while the power supply unit—including compressor and condenser—adds only **15 kg**.

## Precision Temperature Control and Energy Efficiency

Direct refrigerant cooling delivers **approximately 50% higher energy efficiency** than water-cooled solutions, while maintaining highly uniform cold-plate temperatures through phase-change heat transfer. Comparative testing has shown that DRC systems consume roughly **half the electrical power** of traditional liquid chillers under identical operating conditions.

Thermal regulation is both precise and responsive. The variable-speed compressor adapts continuously to changing heat loads, maintaining laser operating temperature within **±0.1 °C** across the full performance range.

FemtoLux lasers use a **low-global-warming-potential (GWP) refrigerant** approved for laboratory operation and transport. Compared to alternative cooling methods, DRC consumes about half the power of chiller-based systems and up to **eight times less** than thermoelectric cooling solutions. Unlike air cooling, DRC can operate **below ambient temperature** or hold a tightly defined thermal setpoint.

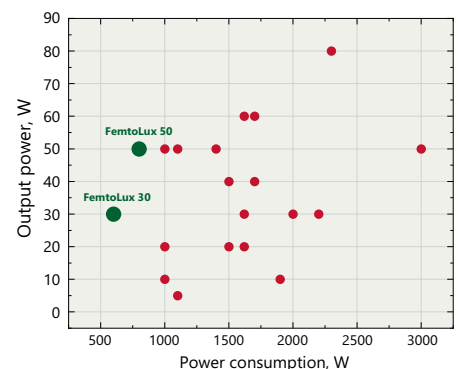
## Proven Reliability from Military to Industry

This cooling approach has been deployed by **Aspen Systems** for more than 15 years in demanding defense applications where size, weight, efficiency, and reliability are critical. These include military communications systems, high-power directed-energy platforms on armored vehicles, transport enclosures, ships, and helicopters.



Aspen refrigeration systems, as used in military applications.  
Courtesy of Aspen Systems Inc.

The technology demonstrates a mean time between failures (MTBF) exceeding **90,000 hours**, enabling continuous operation for more than a decade. In long-term testing, FemtoLux lasers have demonstrated stable operation beyond **25,000 hours**. Compressor service life typically surpasses that of water-chiller pumps by a factor of **three to five**, further enhancing system reliability.

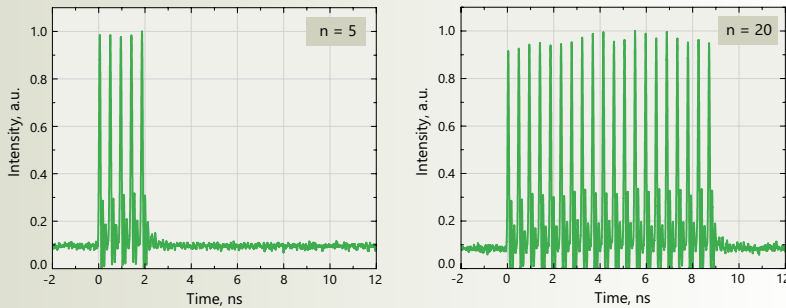


FemtoLux 30 and 50 power consumption and output power comparison versus other ultrafast lasers manufacturers

# GHz Burst Option

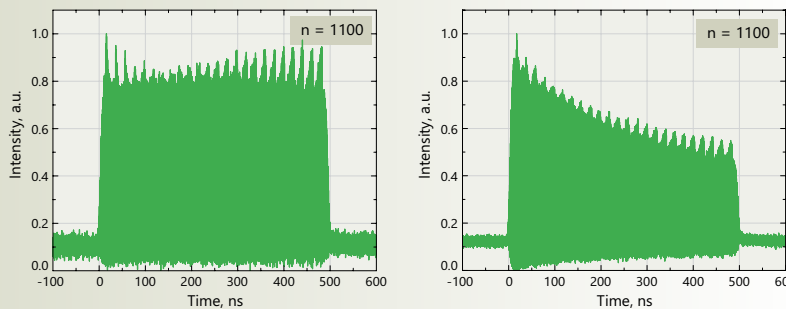
Patent-Pending Method for Ultra-High Rate Bursts

## Short GHz burst



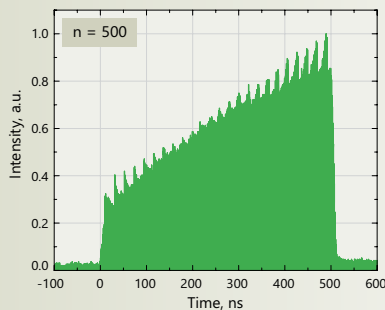
**Fig 1-2.** Measured 2.2 GHz intra-burst PRR burst of pulses containing a different number of pulses of equal amplitudes at 31.5 W average output power

## Long GHz burst

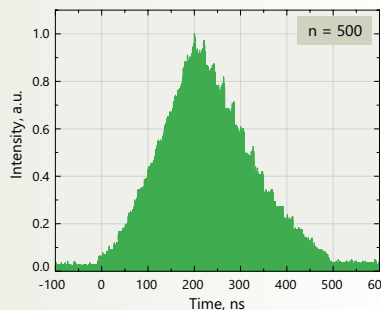


**Fig 3.** Measured 2.2 GHz pre-shaped bursts of 1100 pulses at 233 kHz burst repetition rate for the desired rectangular-like burst shape

**Fig 4.** Measured 2.2 GHz non-pre-shaped bursts of 1100 pulses at 233 kHz burst repetition rate



**Fig 5.** Measured 2.2 GHz pre-shaped bursts of 500 pulses at 233 kHz burst repetition rate for the desired rising burst shape



**Fig 6.** Measured 2.2 GHz pre-shaped bursts of 500 pulses at 233 kHz burst repetition rate for the desired triangle burst shape

## Benefits

The Femtolux laser can operate in the **single-pulse** mode, **MHz burst** mode, **GHz burst** mode, and **MHz + GHz burst** mode.

The burst formation technique based on the use of the AFL is a very versatile method as it allows to overcome many limitations encountered by other fiber- and/or solid-state-based techniques.

**Any desired intra-burst PRR can be achieved** independently from the initial PRR of the master oscillator

**Identical pulse separation** inside the GHz bursts is maintained

**Short- and long-burst formation modes can be provided.**

/ A short burst is up to about 10 ns burst width (from 2 to tens of pulses in the GHz burst).

/ A long burst is from ~20 ns up to a few hundred ns in burst width (from tens to thousands of pulses in the GHz burst)

**MHz+GHz burst** mode

**An adjustable amplitude envelope** of the GHz bursts is provided

**No pre/post pulses** in GHz burst. Pure GHz bursts

**Ultrashort pulse duration** is maintained inside the bursts

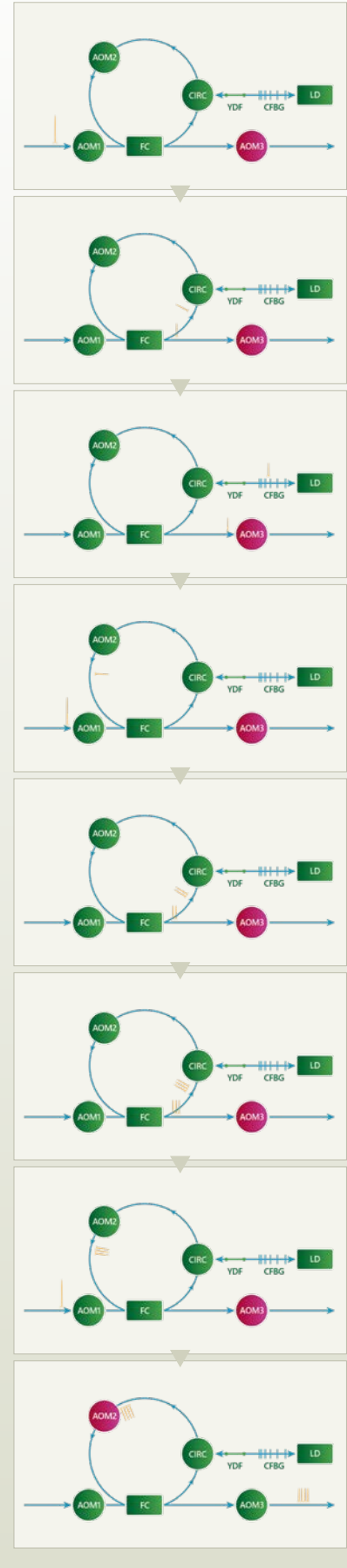
## A new versatile patent-pending method to form ultra-high repetition rate bursts of ultrashort laser pulses.

The developed method is based on the use of an all-in-fiber active fiber loop (AFL). A detailed description of the invention can be found on:

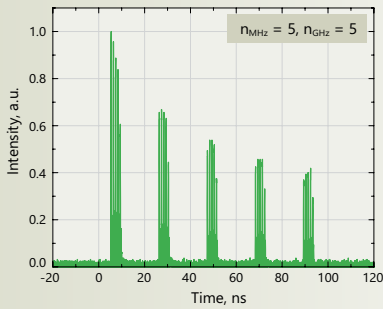
[1] Andrejus Michailovas, and Tadas Bartulevičius. 2021 Int. patent application published under the Patent Cooperation Treaty (PCT) WO2021059003A1.

[2] Tadas Bartulevičius, Mykolas Lipnickas, Virginija Petrauskienė, Karolis Madeikis, and Andrejus Michailovas, (2022), "30 W-average-power femtosecond NIR laser operating in a flexible GHz-burst-regime," Opt. Express 30, 36849-36862.

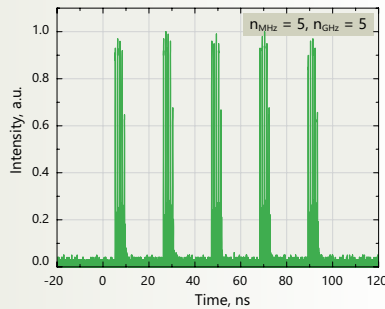
## Principle of AFL Technology



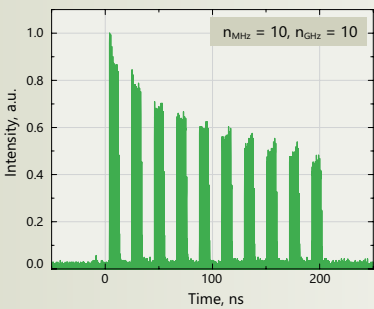
### MHz + GHz burst mode



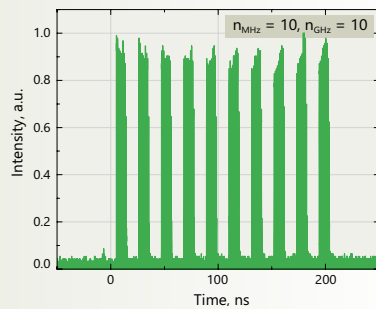
**Fig 7.** Measured 5 bursts of 50 MHz burst repetition rate containing 5 pulses of 2.5 GHz intra-burst PRR



**Fig 8.** Measured rectangular shape 5 bursts of 50 MHz burst repetition rate containing 5 pulses of 2.5 GHz intra-burst PRR



**Fig 9.** Measured 10 bursts of 50 MHz burst repetition rate containing 10 pulses of 2.5 GHz intra-burst PRR



**Fig 10.** Measured rectangular shape 10 bursts of 50 MHz burst repetition rate containing 10 pulses of 2.5 GHz intra-burst PRR

See video showing principle of AFL technology

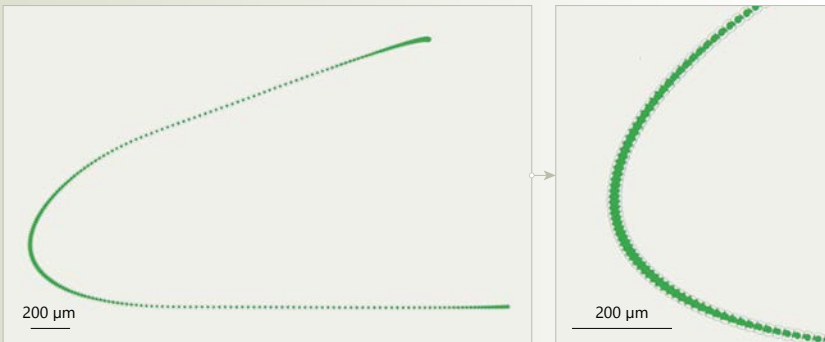


# Pulse-on-Demand (PoD)

Traditional laser triggering techniques struggle to maintain equally spaced pulses at high speeds (Fig.1, 2). Pulse-on-demand feature tackles this challenge and enables high-speed micromachining (Fig. 3).

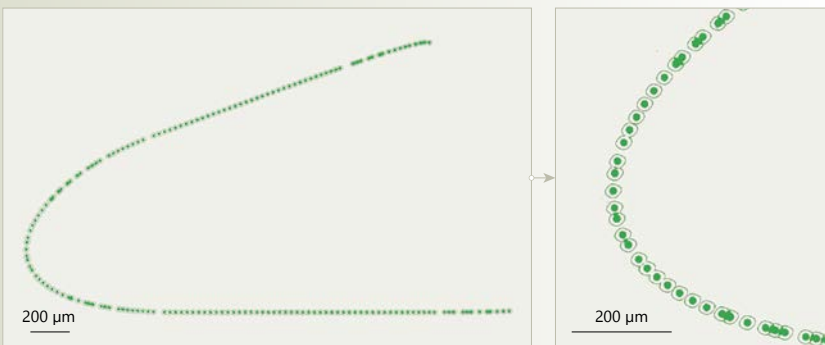
## Time based laser triggering

**Fig 1.** Complex shape scanned with time based laser triggering mode with a pulse repetition of 200 kHz and scanning speed of 6 m/s. The scanning started from the top right to the bottom right area. Overlapping pulses result in an overheated area.



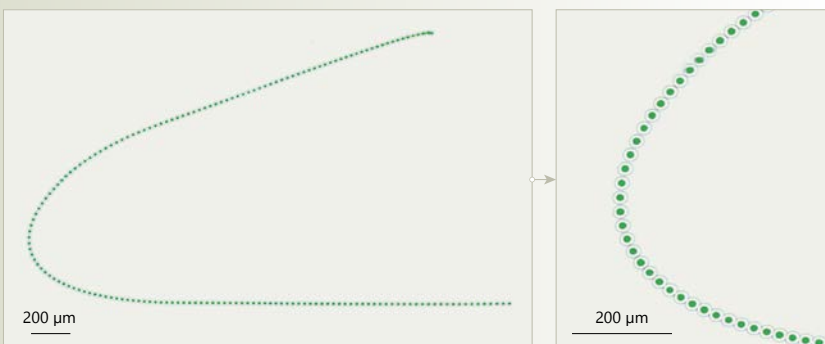
## Position based laser triggering

**Fig 2.** Complex shape scanned with position based laser triggering mode with a pitch of 30 µm and scanning speed of 6 m/s. The scanning started from the top right to the bottom right area. Jitter of tens of µs results in random pulse spacing.



## Pulse-on-demand (PoD)

**Fig 3.** Complex shape scanned with pulse-on-demand (PoD) and position based laser triggering mode with a pitch of 30 µm and scanning speed of 6 m/s. The scanning started from the top right to the bottom right area. PoD feature preserves equidistant pulse spacing at high speeds.



## Benefits


**Jitter lower than 20 ns** ensures consistent and equidistant pulse spacing for high-speed micromachining

**Adjustable repetition rate** for processing complex geometries

**Faster processing speeds,** increased productivity

**PoD feature enables the laser to fire a pulse only when required, rather than at a constant rate, enabling precise control over the laser's output and resulting in higher efficiency, accuracy and quality.**

This capability is especially valuable in various micromachining applications where a high processing speed, constant energy, and accuracy are essential. To follow complex curvature at high speed and to maintain equidistant spacing it is necessary to ensure that the repetition rate of the pulses is adjusted. To achieve these requirements, it is necessary to ensure that the repetition rate of the pulses is adjusted to follow complex curvature at high speed and to maintain equidistant spacing. One may try to use position based laser triggering but, due to laser system limitations, the jitter will be from several µs to tens of µs, which will result in random spacing of the pulses. On the other hand, the usage of time based laser triggering results in overheat areas, due to excessive overlap of pulses. The FemtoLux laser has the pulse-on-demand feature with jitter as low as 20 ns (peak-to-peak), and it can therefore tackle all the challenges and maximize process efficiency, precision and quality at high speed.

Model	FemtoLux 30	FemtoLux 50	FemtoLux HE
<b>Main specifications</b>			
Central wavelength	1030 nm		
Laser pulse repetition rate (PRR) <sup>2)</sup>	200 kHz – 2 MHz, 4 MHz optional	100 kHz – 2 MHz, 4 MHz optional	10 kHz – 1 MHz
Pulse picker PRR	Laser PRR / N, N=1, 2, 3, ... , 65000; single shot		
Maximal average output power <sup>3)</sup>	≥ 30 W	≥ 45 W (typical 50 W)	≥ 30 W
Pulse energy <sup>4)</sup>	≥ 100 μJ, 300 μJ optional	≥ 250 μJ (typical 300 μJ)	1 mJ
Power long term stability (Std. dev.) <sup>5)</sup>	< 0.5 %		
Pulse energy stability (Std. dev.) <sup>6)</sup>	< 1 %		
Pulse duration (FWHM) @ 1 MHz <sup>7)</sup>	< 400 fs – 1 ps		
Number of pulses in MHz burst <sup>8)</sup>	2 – 10		
Total energy in burst mode <sup>9)</sup>	> 450 μJ	> 750 μJ	2 mJ
Beam quality	M <sup>2</sup> < 1.2 (typical < 1.1)		M <sup>2</sup> < 1.3
Beam ellipticity, far field	> 0.85 (typical ≥ 0.9)		
Beam divergence (full angle)	< 1 mrad		
Beam pointing thermal stability	< 20 μrad/°C		
Beam diameter (1/e <sup>2</sup> )	2.5 ± 0.4 mm @ 65 cm		
Polarization	vertical		
Synchronization mode	internal / external		
Pulse output control	frequency divider, pulse picker, burst mode, packet triggering, power attenuation, pulse-on-demand		
Control interfaces	RS232 / LAN		
Length of the umbilical cord	3 m, detachable		
Laser head cooling type	dry (direct refrigerant cooling through detachable cooling plate), water cooling optional		
<b>Physical characteristics</b>			
Laser head (W × L × H)	434 × 569 × 150 mm		
Power supply unit (W × L × H)	483 × 534 × 184 mm		
<b>Operating requirements</b>			
Mains requirements	100 – 240 V AC, single phase, 50/60 Hz		
Maximal power rating	1000 W		
Operating ambient temperature	18 – 27 °C		
Relative humidity	10–80 % (non-condensing)		
Air contamination level	ISO 9 (room air) or better		
<p><sup>1)</sup> Due to continuous improvement, all specifications are subject to change without notice. Parameters marked typical are not specifications. They are indications of typical performance and will vary with each unit we manufacture. All parameters are specified for a shortest pulse duration. Unless stated otherwise, all specifications are measured at 1030 nm and for basic system without options.</p> <p><sup>2)</sup> When frequency divider is set to transmit every pulse. Fully controllable by integrated AOM.</p> <p><sup>3)</sup> At 1 MHz. Please see graphs for power vs laser pulse repetition rate of FemtoLux series lasers.</p> <p><sup>4)</sup> For FemtoLux 30 maximal pulse energy 300 μJ at 50 kHz. Standard energy 100 μJ at 200 kHz.</p> <p><sup>5)</sup> Over 100 h after warm-up under constant environmental conditions.</p> <p><sup>6)</sup> Under constant environmental conditions.</p> <p><sup>7)</sup> Please see graph for typical pulse duration for different repetition rates.</p> <p><sup>8)</sup> Oscillator frequency ~50 MHz, ~20 ns separation between pulses.</p> <p><sup>9)</sup> For MHz burst mode or MHz+GHz burst mode at 50 kHz PRR. For Femtolux HE at 10 kHz.</p>			
<div style="border: 1px solid black; padding: 5px; display: inline-block;">  <p><b>DANGER: VISIBLE AND/OR INVISIBLE LASER RADIATION AVOID EYE OR SKIN EXPOSURE TO DIRECT, REFLECTED OR SCATTERED RADIATION</b> <b>CLASS 4 LASER PRODUCT</b></p> </div>			

# Harmonics modules

Central wavelength	515 nm	343 nm
<b>Main specifications <sup>1)</sup></b>		
Pulse energy <sup>2)</sup>	50 µJ	30 µJ
Average power	up to 25 W	up to 10 W
Beam quality	M <sup>2</sup> < 1.2	M <sup>2</sup> < 1.3
Beam ellipticity, far field	> 0.85	
Beam divergence (full angle)	< 0.7 mrad	< 0.5 mrad
Beam diameter (1/e <sup>2</sup> )	2.2 ± 0.4 mm @ 30 cm	2.4 ± 0.4 mm @ 30 cm
<b>Physical characteristics</b>		
Laser head with harmonic module (W × L × H)	434 × 747 × 158 mm	
<sup>1)</sup> Harmonics are optimized at shortest pulse duration and 100 µJ pulse energy. For optimization at different pulse duration or energy, please inquire sales@ekspla.com. <span style="margin-left: 100px;"><sup>2)</sup> Please see graphs for power vs laser pulse repetition rate graphs of FemtoLux series lasers.</span>		

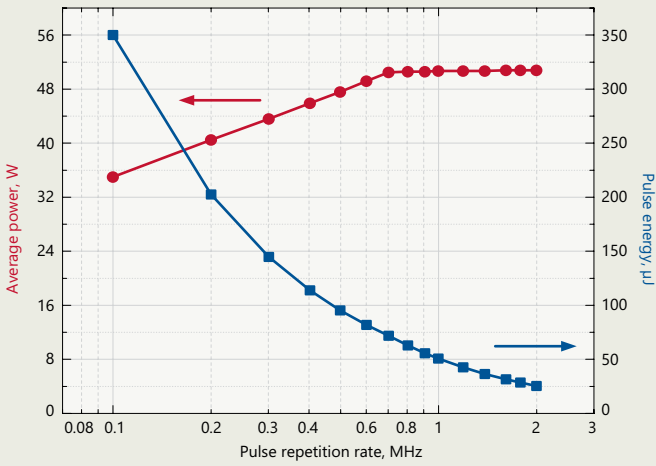
# GHz burst option

Main specifications		
Laser Pulse Repetition Rate (PRR)	up to 500 kHz	
Intra-burst pulse repetition rate <sup>1)</sup>	2 ± 0.25 GHz	
GHz burst mode	short	long
GHz burst length	0.5 – 10 ns	20 – 500 ns
Number of pulses <sup>2)</sup>	2 – 20	40 – 1000
Shape	square, rising, falling	falling, pre-shaped <sup>3)</sup>
MHz + GHz burst mode		
Number of pulses in MHz burst	2 – 10	
Number of pulses in GHz burst <sup>2)</sup>	2 – 20	
<sup>1)</sup> Custom intra-pulse PRR is available upon a request. <sup>2)</sup> Depends on the intra-pulse PRR. <sup>3)</sup> For more information, please inquire sales@ekspla.com.		

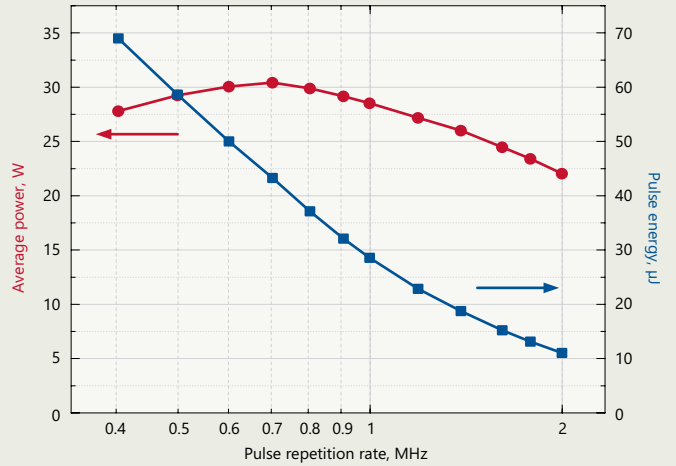


FemtoLux with harmonics module and power supply

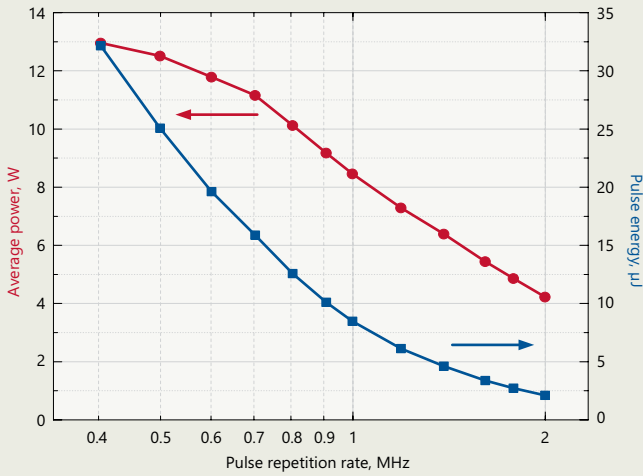
# Performance of FemtoLux 50



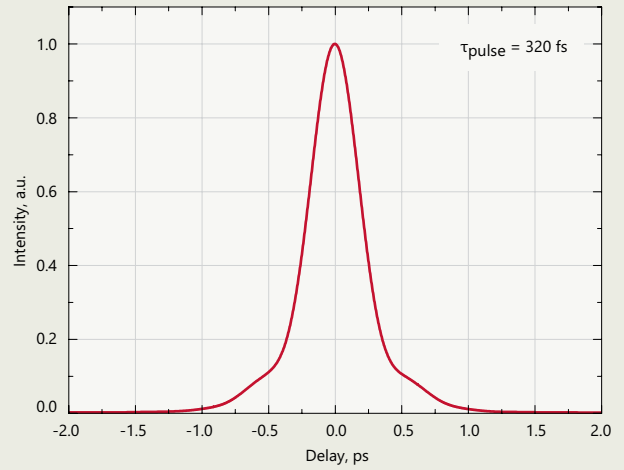
**Fig 1.** Typical dependence of output power and pulse energy of FemtoLux 50 laser at 1030 nm on pulse repetition rate



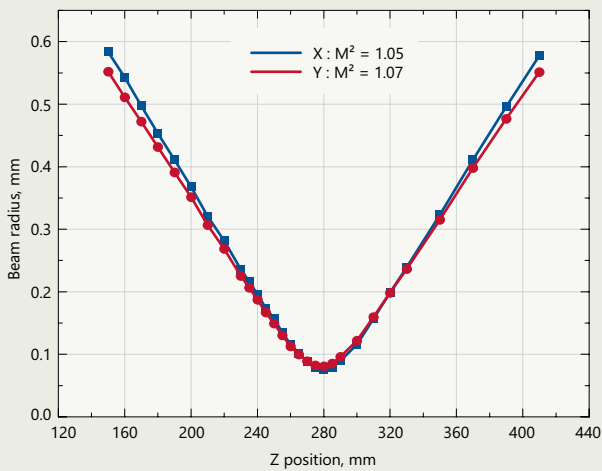
**Fig 2.** Typical dependence of output power and pulse energy of FemtoLux 50 laser at 515 nm on pulse repetition rate



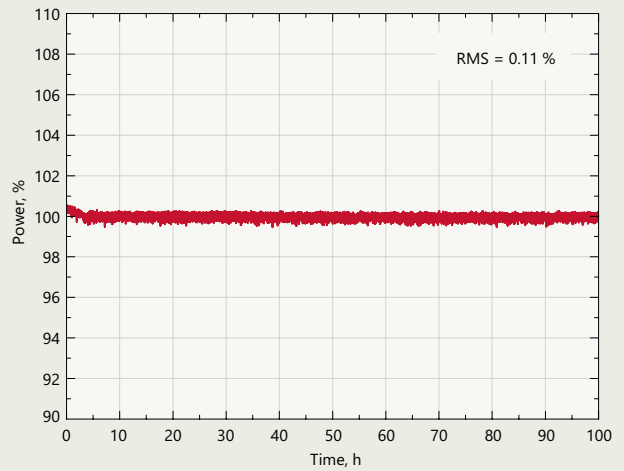
**Fig 3.** Typical dependence of output power and pulse energy of FemtoLux 50 laser at 343 nm on pulse repetition rate



**Fig 4.** Typical FemtoLux 50 laser output pulse autocorrelation function at 1030 nm @ 1 MHz

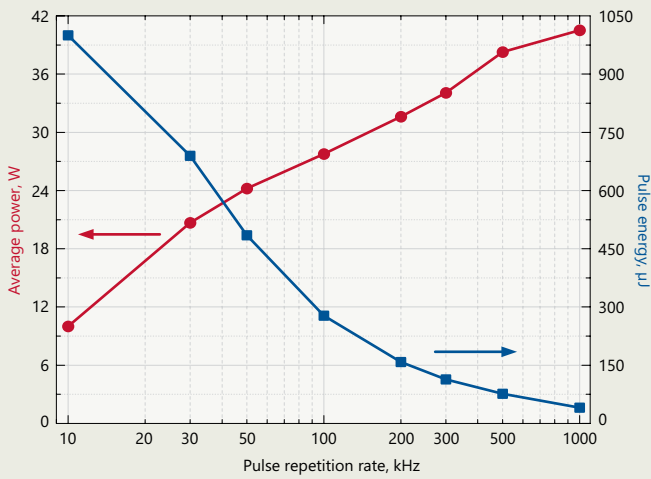


**Fig 5.** Typical  $M^2$  measurement of FemtoLux 50 laser at 1030 nm



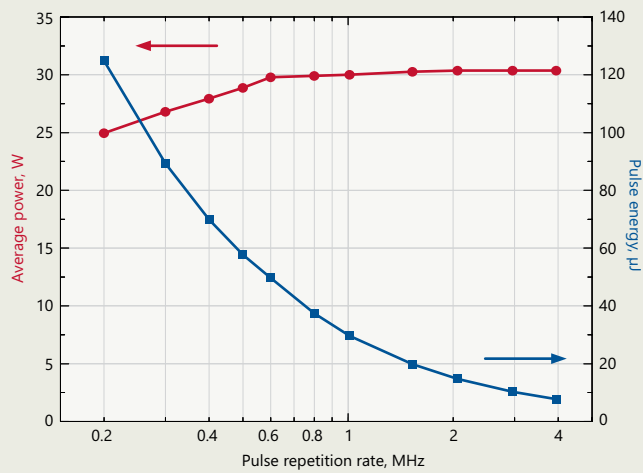
**Fig 6.** Typical long term average power stability of FemtoLux 50 laser at 1030 nm under constant environmental conditions

# Performance of FemtoLux HE

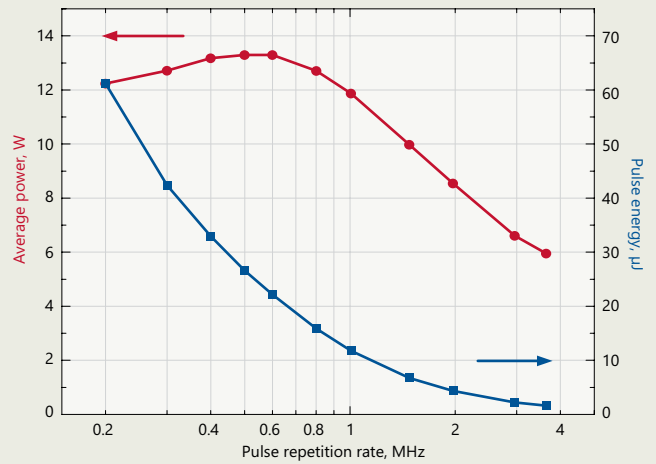


**Fig 7.** Typical dependence of output power and pulse energy of FemtoLux HE laser at 1030 nm on pulse repetition rate

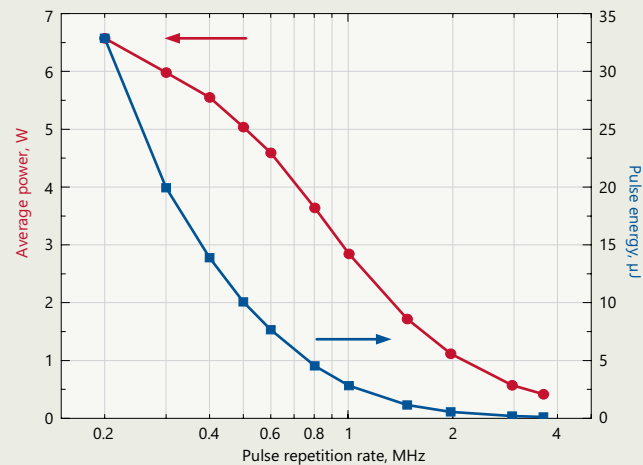
# Performance of FemtoLux 30



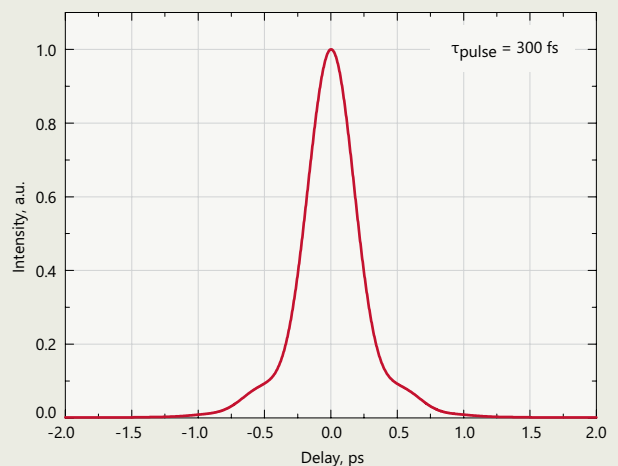
**Fig 8.** Typical dependence of output power and pulse energy of FemtoLux 30 laser at 1030 nm on pulse repetition rate



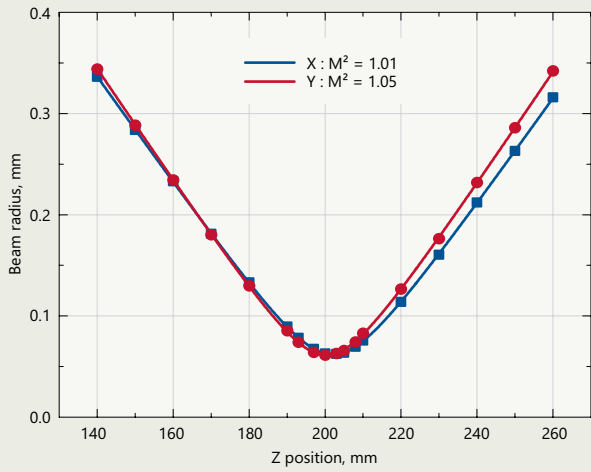
**Fig 9.** Typical dependence of output power and pulse energy of FemtoLux 30 laser at 515 nm on pulse repetition rate



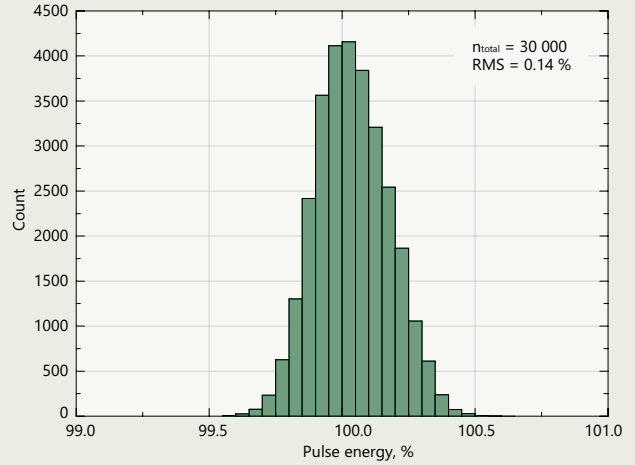
**Fig 10.** Typical dependence of output power and pulse energy of FemtoLux 30 laser at 343 nm on pulse repetition rate



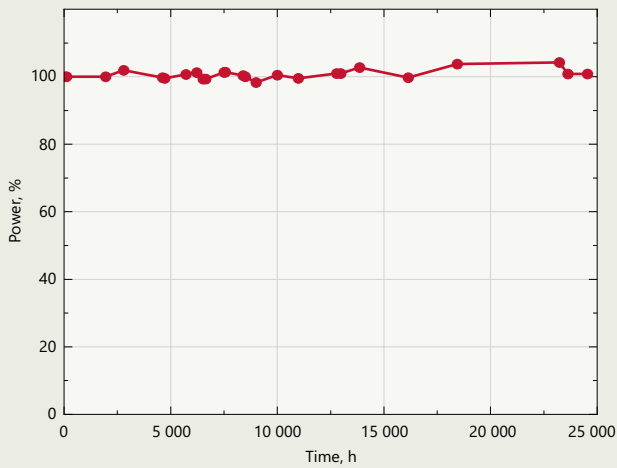
**Fig 11.** Typical FemtoLux 30 laser (at 1030 nm) output pulse autocorrelation function



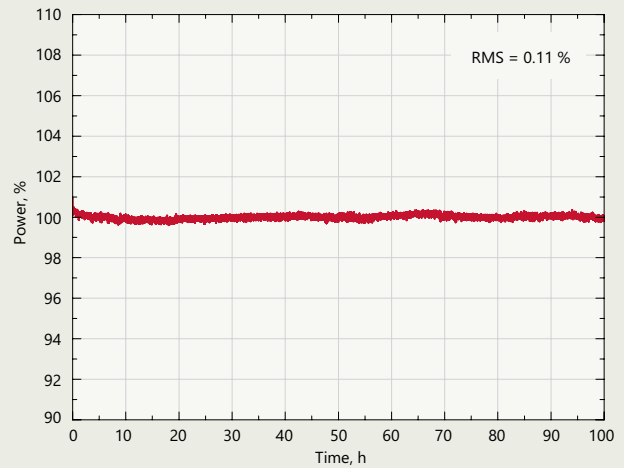
**Fig 12.** Typical  $M^2$  measurement of FemtoLux 30 laser at 1030 nm



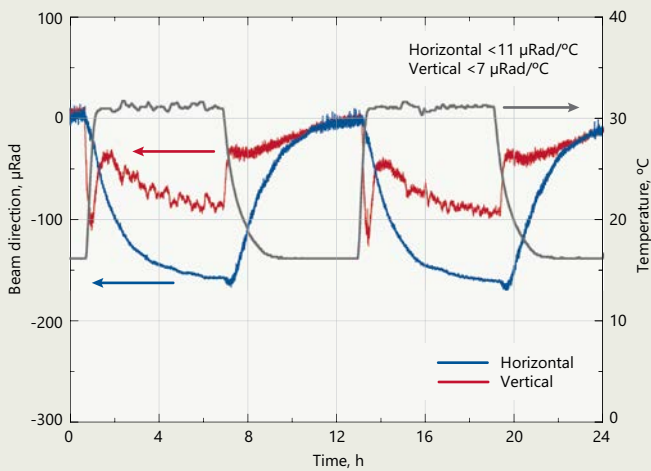
**Fig 13.** Typical pulse-to-pulse energy stability of FemtoLux 30 laser at 200 kHz over 30 000 pulses. RMS was calculated by using a set of mean values of 10 consecutive laser shots



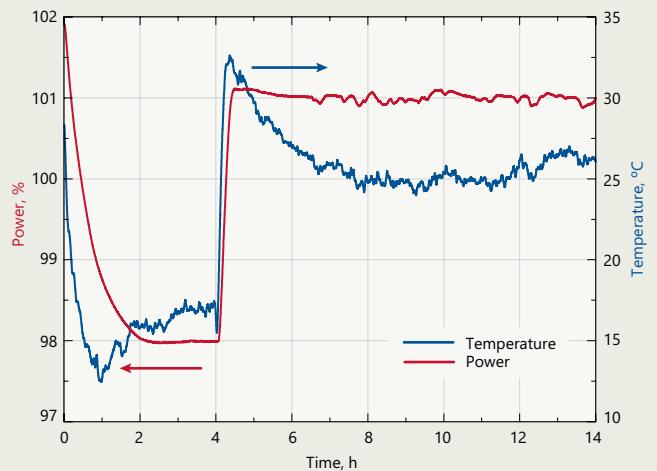
**Fig 14.** Long-term average power stability of the FemtoLux 30 laser at 1030 nm under constant environmental conditions over an extended duration of 25,000 hours



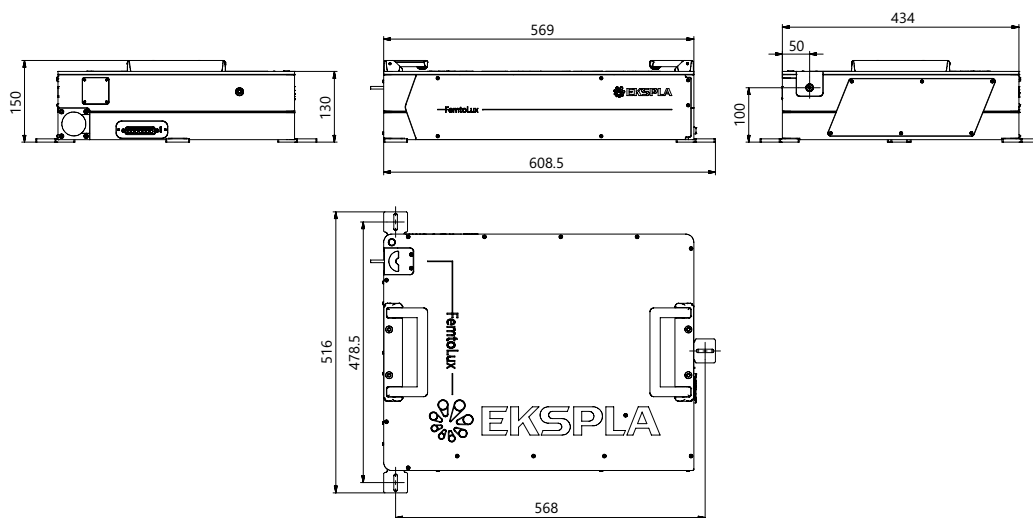
**Fig 15.** Typical long term average power stability of FemtoLux 30 laser at 1030 nm under constant environmental conditions



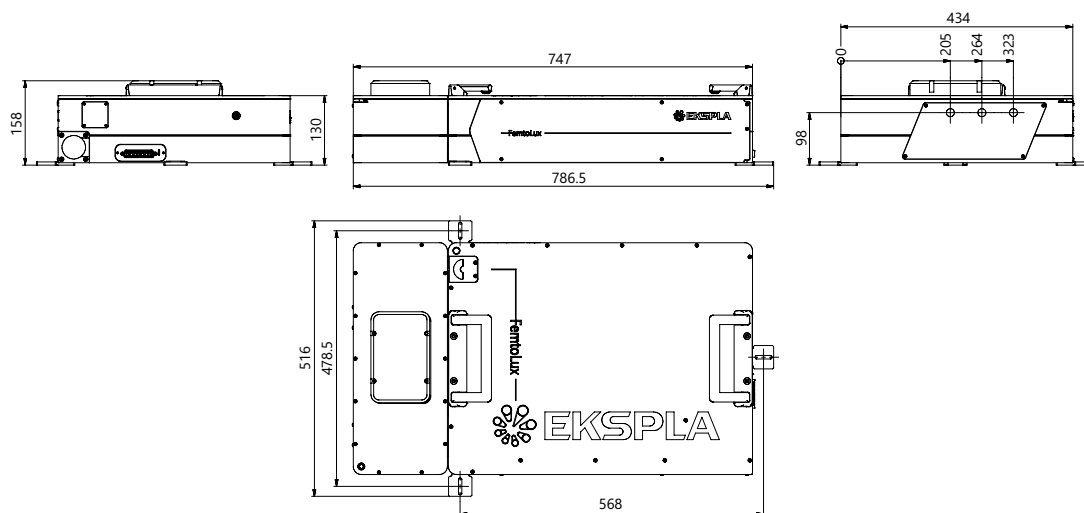
**Fig 16.** Typical beam direction stability of FemtoLux 30 under harsh environmental conditions



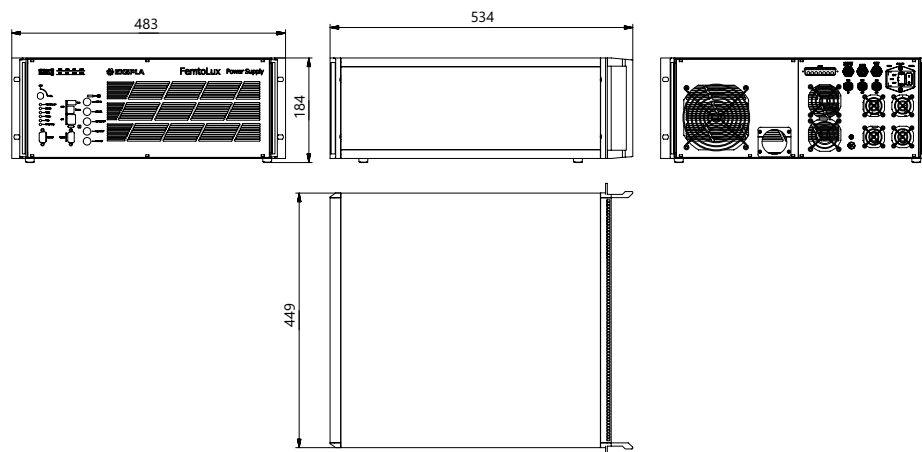
**Fig 17.** Average output power dependence of FemtoLux 30 laser on ambient temperature at 1030 nm



**Fig 11.** FemtoLux laser head outline drawing



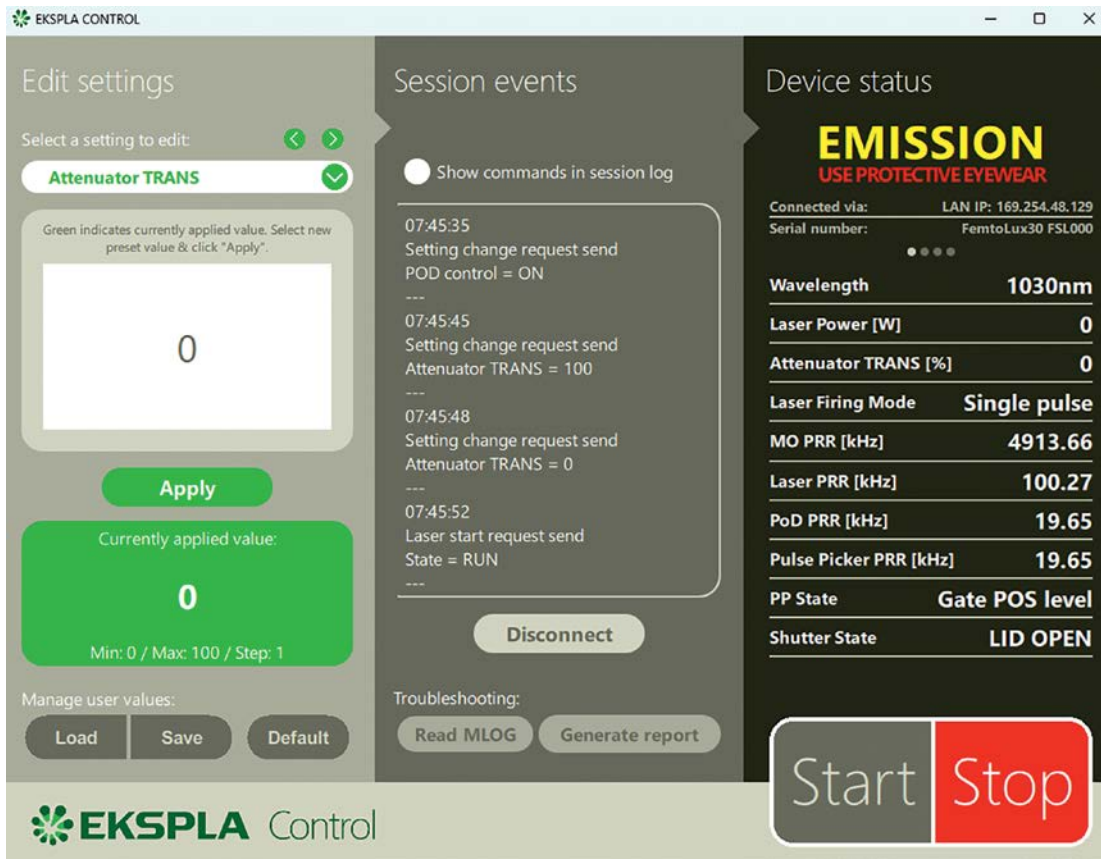
**Fig 12.** FemtoLux with harmonics module. Laser head outline drawing



**Fig 13.** Power supply outline drawing

# Laser control application

Ekspla Control Application is a software tool intended for day-to-day routine operation control. It is used to control the laser in API level through LAN or RS-232 communication types, the control capabilities are stored in the laser system itself, software is self-adaptive to the system, one application can be used with multiple systems and can run on different platforms – be it Windows, Linux or others using REST API commands.



fs

Industrial  
Femtosecond  
Lasers

# FemtoLux 3

## Applications

- / Inner volume marking of transparent materials
- / Marking and structuring
- / Micromachining of brittle materials
  - / Photopolymerization
- / Ophthalmologic surgery
  - / Biological Imaging
- / Pumping of femtosecond OPO/OPA
  - / Microscopy



# Microjoule Class Femtosecond Industrial Lasers

## FemtoLux 3

**FemtoLux 3 is a modern femtosecond fiber laser aimed for both R&D use and industrial integration.**

Tunable pulse duration in a range of 300 fs – 2.5 ps, adjustable pulse repetition rate up to 7 MHz and adjustable pulse energy up to 3  $\mu\text{J}$  allows optimization of laser parameters for the desired application. These include marking and volume structuring of transparent materials, photopolymerization, biological imaging, nonlinear microscopy and many others. To expand the scope of applications even further this laser can be equipped with a second harmonics module.

With burst mode enabled, FemtoLux 3 can generate bursts of pulses with energy above 10  $\mu\text{J}$  which can significantly improve the efficiency of processes.

Having a rigid, compact, passive air-cooled laser head FemtoLux 3 can be integrated with different equipment, be it laser equipment for material micro-processing, microscopy or any other research equipment.



FemtoLux 3 laser with control unit

## Features

Output power  
**3 W at 1030 nm,  
1.2 W at 515 nm**

Up to **3  $\mu\text{J}$ /pulse** and  
**10  $\mu\text{J}$ /burst** (at 1030 nm)

Up to **1.2  $\mu\text{J}$ /pulse** and  
**5  $\mu\text{J}$ /burst** (at 515 nm)

**< 300 fs ... 2.5 ps**  
tunable pulse duration

**$M^2 < 1.2$**

Versatile laser control and  
synchronisation capabilities

Up to 5 MHz (**7 MHz** optional)  
pulse repetition rate

Smart triggering for  
synchronous operation with  
polygon scanner and PSO

Instant amplitude control

Passive air cooling of the laser  
head


24/7 operation

	Output power	Pulse energy	Burst mode
At 1030 nm	3 W	3 $\mu\text{J}$	10 $\mu\text{J}$
At 515 nm	1.2 W	1.2 $\mu\text{J}$	5 $\mu\text{J}$

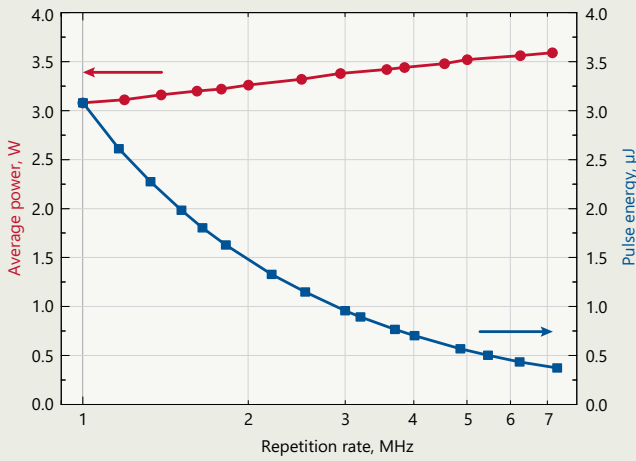


Learn more  
about FemtoLux 3  
[www.ekspla.com](http://www.ekspla.com)

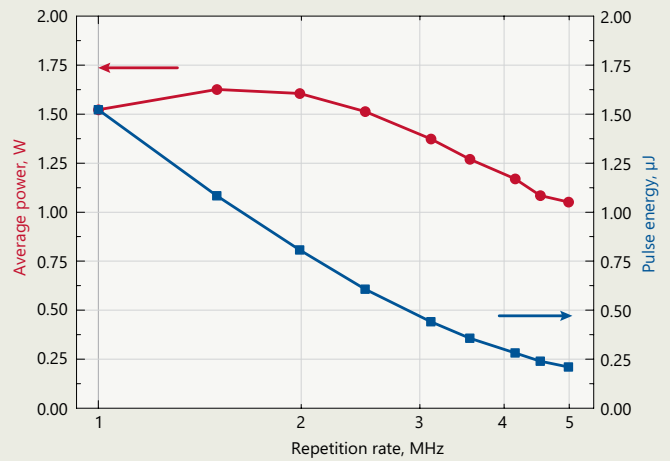
## Specifications <sup>1)</sup>

Model		FemtoLux 3
<b>Main specifications</b>		
Central wavelength	fundamental	1030 nm
	with second harmonic option	515 nm
Minimal pulse duration (FWHM) at 1030 nm		< 300 fs (typical ~230 fs)
Pulse duration tuning range		300 fs – 2.5 ps
Maximal average output power <sup>2)</sup>	at 1030 nm	> 3 W
	at 515 nm	> 1.2 W
Power long term stability (Std. dev.) <sup>3)</sup>		≤ 0.5 %
Maximal pulse energy <sup>2)</sup>	at 1030 nm	> 3 μJ
	at 515 nm	> 1.2 μJ
Pulse energy stability (Std. dev.) <sup>4)</sup>		< 2 %
Pulse repetition rate (PRR) <sup>5)</sup>		1 – 5 MHz, 7 MHz optional
Pulse repetition frequency (PRF) after frequency divider		PRF = PRR / N, N=1, 2, 3, ... , 65000; single shot
External pulse gating		via TTL input
Burst mode <sup>6)</sup>		1 – 10 pulses
Max burst energy	at 1030 nm	> 10 μJ
	at 515 nm	> 5 μJ
Burst shape control		via analog input
Power attenuation		0 – 100 % from remote control application or via analog input
Polarization orientation		linear, vertical
Polarization extinction ratio		> 1000:1
M <sup>2</sup>		< 1.2
Beam divergence (full angle)		< 1.0 mrad
Beam ellipticity (far field)		> 0.85
Beam pointing stability (pk-to-pk) <sup>7)</sup>		< 30 μrad
Beam diameter (1/e <sup>2</sup> ) at 36 cm distance from laser aperture	at 1030 nm	2.0 ± 0.3 mm
	at 515 nm	1.0 ± 0.2 mm
<b>Operating requirements</b>		
Mains requirements		100–240 V AC, single phase 47–63 Hz
Maximal power consumption		< 500 W
Operating ambient temperature		15 – 30 °C
Relative humidity		10 – 80 % (non-condensing)
Air contamination level		ISO 9 (room air) or better
<b>Physical characteristics</b>		
Cooling of the laser head		air, passive
Laser head size (L×W×H)	at 1030 nm	459.5 × 362 × 111 mm
	at 515 nm	615.3 × 362 × 139 mm
Power supply unit size (L×W×H)	stand-alone	496 × 483 × 184 mm
	19" rack mountable	548 × 483 × 184 mm
Umbilical length		5 m
<b>Classification</b>		
Classification according EN60825-1		CLASS 4 laser product
<p><sup>1)</sup> Due to continuous improvement, all specifications are subject to change without notice. Parameters marked typical are not specifications. They are indications of typical performance and will vary with each unit we manufacture.</p> <p><sup>2)</sup> See typical power and energy curves for other pulse repetition rates at Fig 1, Fig 2. and Fig 4.</p> <p><sup>3)</sup> At 1 MHz PRR during 24 h of operation after warm-up under constant environmental conditions.</p> <p><sup>4)</sup> At 1 MHz PRR under constant environmental conditions.</p> <p><sup>5)</sup> When pulse picker is set to transmit every pulse.</p> <p><sup>6)</sup> Pulse separation inside the burst is about 20 ns.</p> <p><sup>7)</sup> Beam pointing stability is evaluated as a movement of the beam centroid in the focal plane of a focusing element.</p>		
		 <p><b>DANGER: VISIBLE AND/OR INVISIBLE LASER RADIATION AVOID EYE OR SKIN EXPOSURE TO DIRECT, REFLECTED OR SCATTERED RADIATION</b> <b>CLASS 4 LASER PRODUCT</b></p>

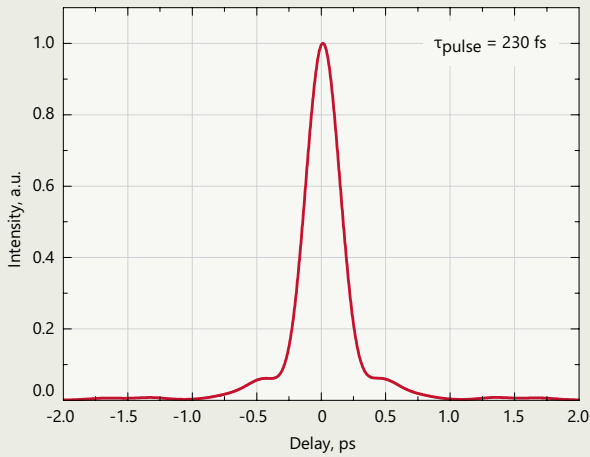
## Performance



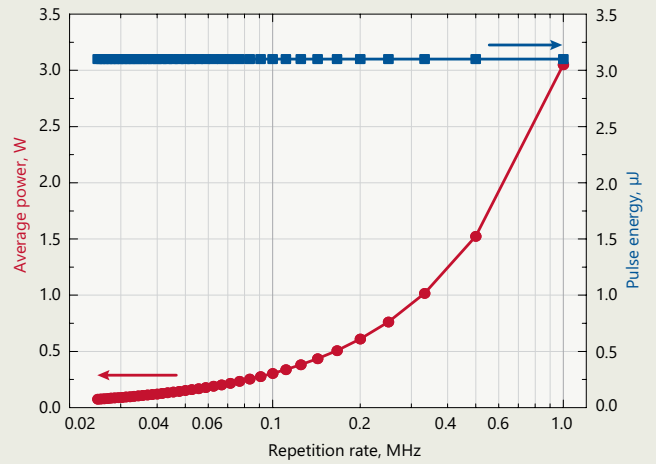
**Fig 1.** Typical dependence of output power and pulse energy of FemtoLux 3 laser at 1030 nm when changing internal repetition rate of the laser



**Fig 2.** Typical dependence of output power and pulse energy of FemtoLux 3 laser at 515 nm on pulse repetition rate

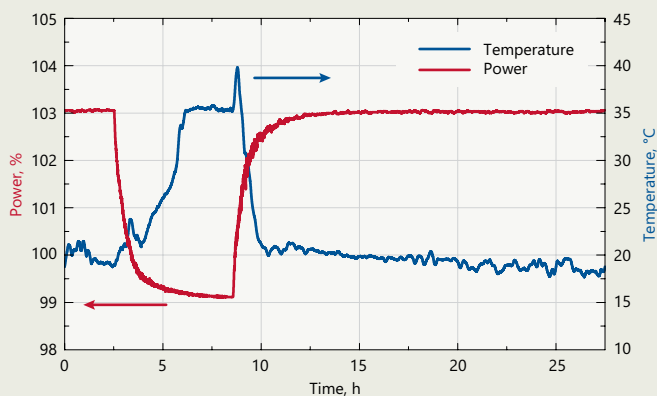


**Fig 3.** Typical FemtoLux 3 laser (at 1030 nm) output pulse autocorrelation function at 3 μJ pulse energy. Calculated pulse duration is 230 fs

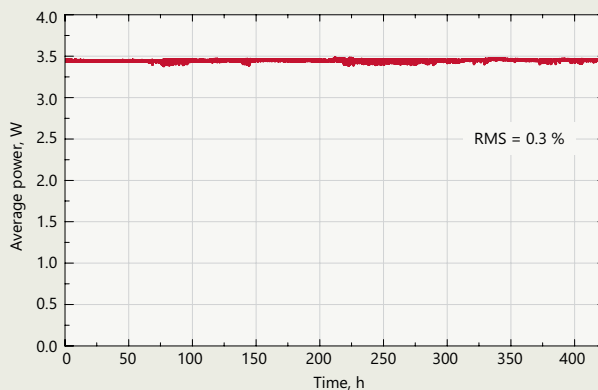


**Fig 4.** Typical dependence of output power and pulse energy of FemtoLux 3 laser at 1030 nm when repetition rate is reduced by pulse picker. Internal repetition rate of the laser in this case is 1 MHz

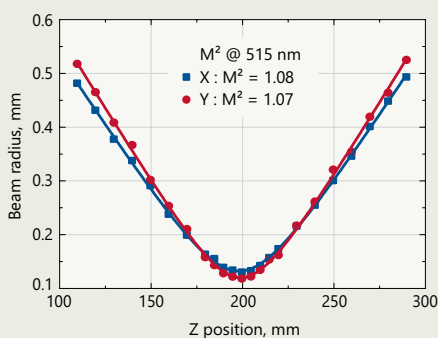
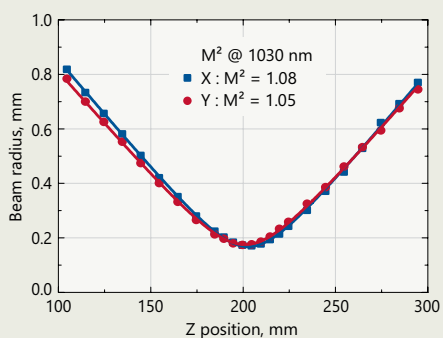
## Stability



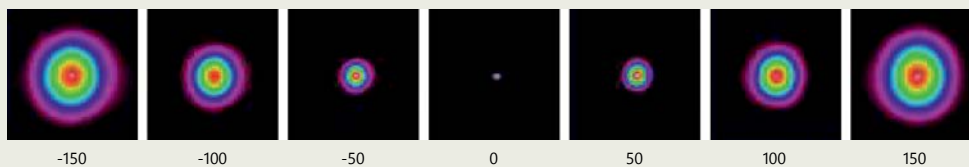
**Fig 5.** Average output power dependence on ambient temperature at 1030 nm



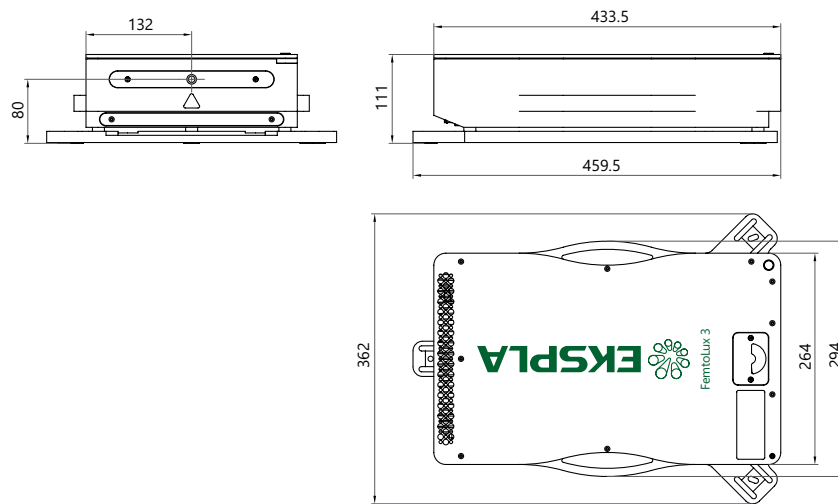
**Fig 6.** Typical long term average output power stability of FemtoLux 3 laser at 1030 nm under constant environmental conditions



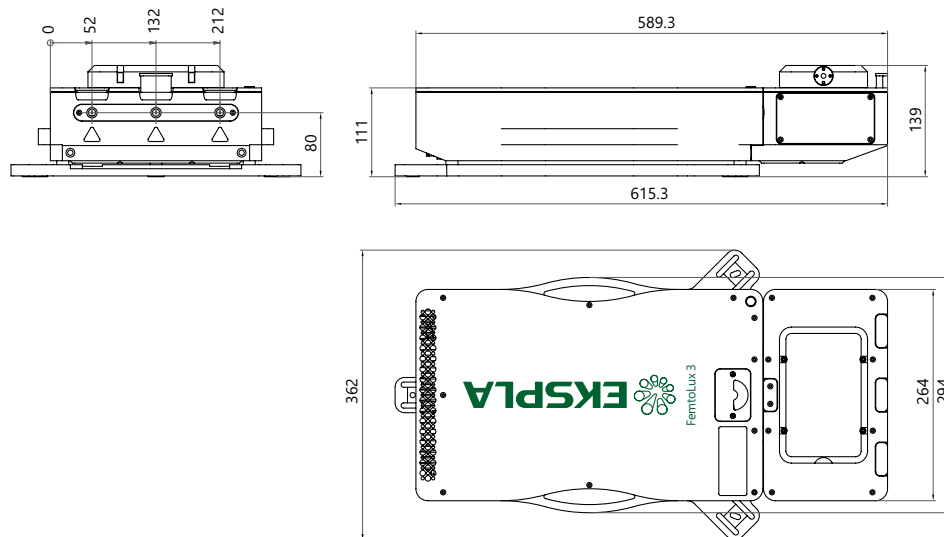
**Fig 7.** Typical M<sup>2</sup> measurement of FemtoLux 3 at 1030 nm (left) and 515 nm (right)



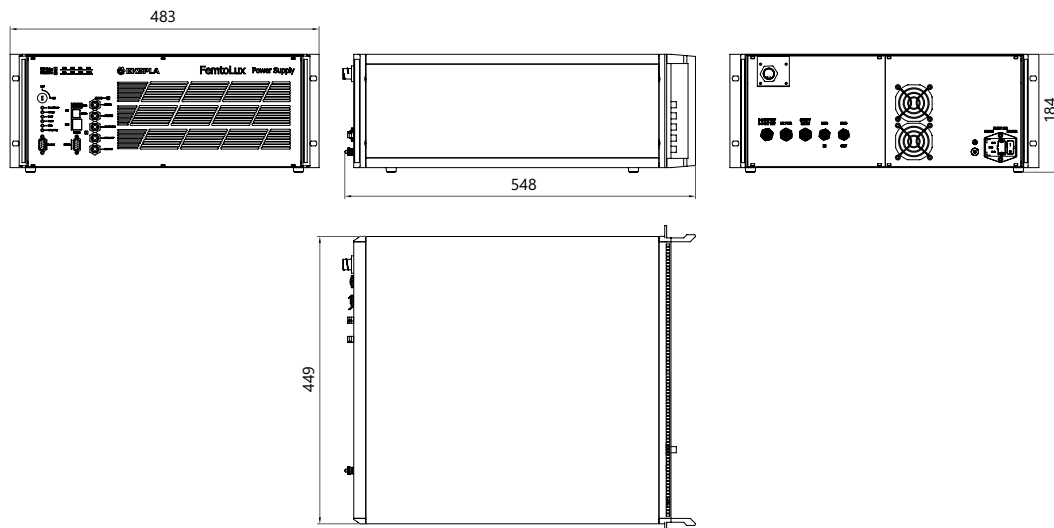
**Fig 8.** Typical beam profiles along propagation axis of FemtoLux 3 series laser



**Fig 10.** Outline drawings of FemtoLux 3 laser head



**Fig 11.** Outline drawings of FemtoLux 3 laser head with second harmonic option



**Fig 12.** Outline drawings of FemtoLux 3 power supply and control unit

# Ordering Information

## Delivery

Products are made and dispatched within agreed term. Shipping charges are object of agreement between EKSPLA and customer.

## Ordering

Orders may be placed by mail, fax or e-mail. All orders are object of General Sales Conditions, which can be found on [www.ekspla.com](http://www.ekspla.com).

Mail orders should be sent to:

EKSPLA, UAB  
Savanoriu Av. 237  
LT-02300 Vilnius  
Lithuania  
Phone: +370 5 264 96 29  
E-mail: [sales@ekspla.com](mailto:sales@ekspla.com)

**Ask for quotation online at [www.ekspla.com](http://www.ekspla.com).**

## Certificate of Origin

All items shown in this catalogue are of Lithuanian Origin (EU). Certificate of Origin is available under request.

## Warranty

All products are guaranteed to be free from defects in material and workmanship. The warranty period depends on the product and is object of agreement between EKSPLA and customer. Warranty period can be extended by separate agreement. EKSPLA does not assume liability for unproper installation, labour or consequential damages.

## Specifications

Due to the constant product improvements, EKSPLA reserves its right to change specifications without advance notice.

For latest information visit [www.ekspla.com](http://www.ekspla.com).



ISO9001 Certified

Find local distributor at  
[www.ekspla.com](http://www.ekspla.com)



Follow us on Linked 

Savanorių Av. 237  
LT-02300 Vilnius  
Lithuania

ph. +370 5 264 96 29  
[sales@ekspla.com](mailto:sales@ekspla.com)  
[www.ekspla.com](http://www.ekspla.com)